

AREA A
CONTINUATION OF SIDEWALK

LEGEND

- EXISTING WATER
- EXISTING SEWER
- EXISTING STORM
- EXISTING CURB
- EXISTING SIDEWALK
- EXISTING FLOWLINE
- EXISTING STRIPEING
- PROPOSED WATER
- PROPOSED STORM
- PROPOSED CURB
- PROPOSED SIDEWALK
- PROPOSED FLOWLINE
- PROPOSED STRIPEING

SCALE 1"=10'

NOTE: BEFORE CONTRACTOR PROCEEDS WITH ANY DEMOLITION WORK OR GRADING WORK, A PLAN FOR TRAFFIC CONTROL AND SCOPE OF WORK WILL BE AGREED UPON BY THE ENGINEER.

FOR ALL TRENCHING INFORMATION SEE DETAILS 23 TO 26 AND USE WHERE APPLICABLE SEE DETAIL 27 FOR ADDITIONAL BACKFILLING INFORMATION.

STAMPED CONCRETE IS TO HAVE A RED COLORING, TO BE APPROVED BY THE ENGINEER. STAMP PATTERN FOR THE CONCRETE MAY BE CHOSEN BY CONTRACTOR BUT MUST BE APPROVED BY ENGINEER BEFORE USE.

NO.	DATE	DESCRIPTION	BY
3	7/21/08	LANDING GROOVE ALTERATIONS	EBH
2	6/10/08	REVISED SUBMITAL	EBH
1	5/29/08	REVISED SUBMITAL	EBH
0	5/19/08	INITIAL SUBMITAL	EBH

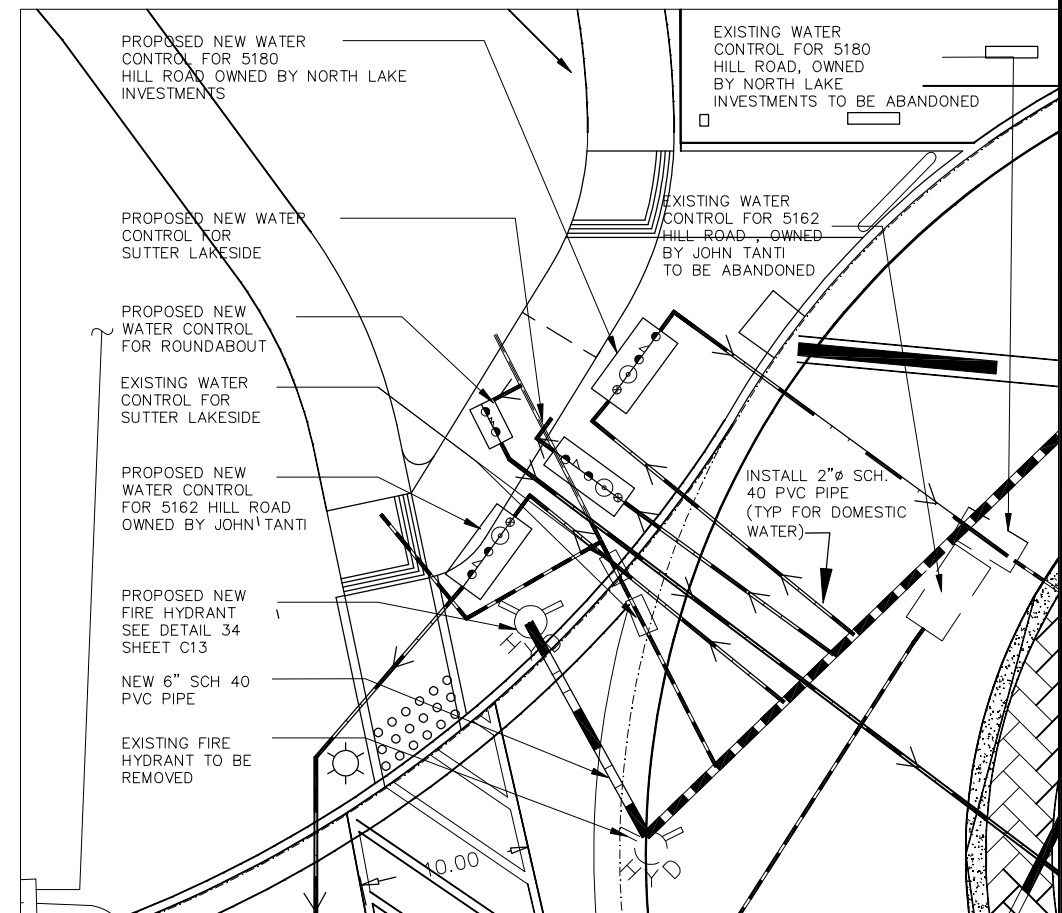
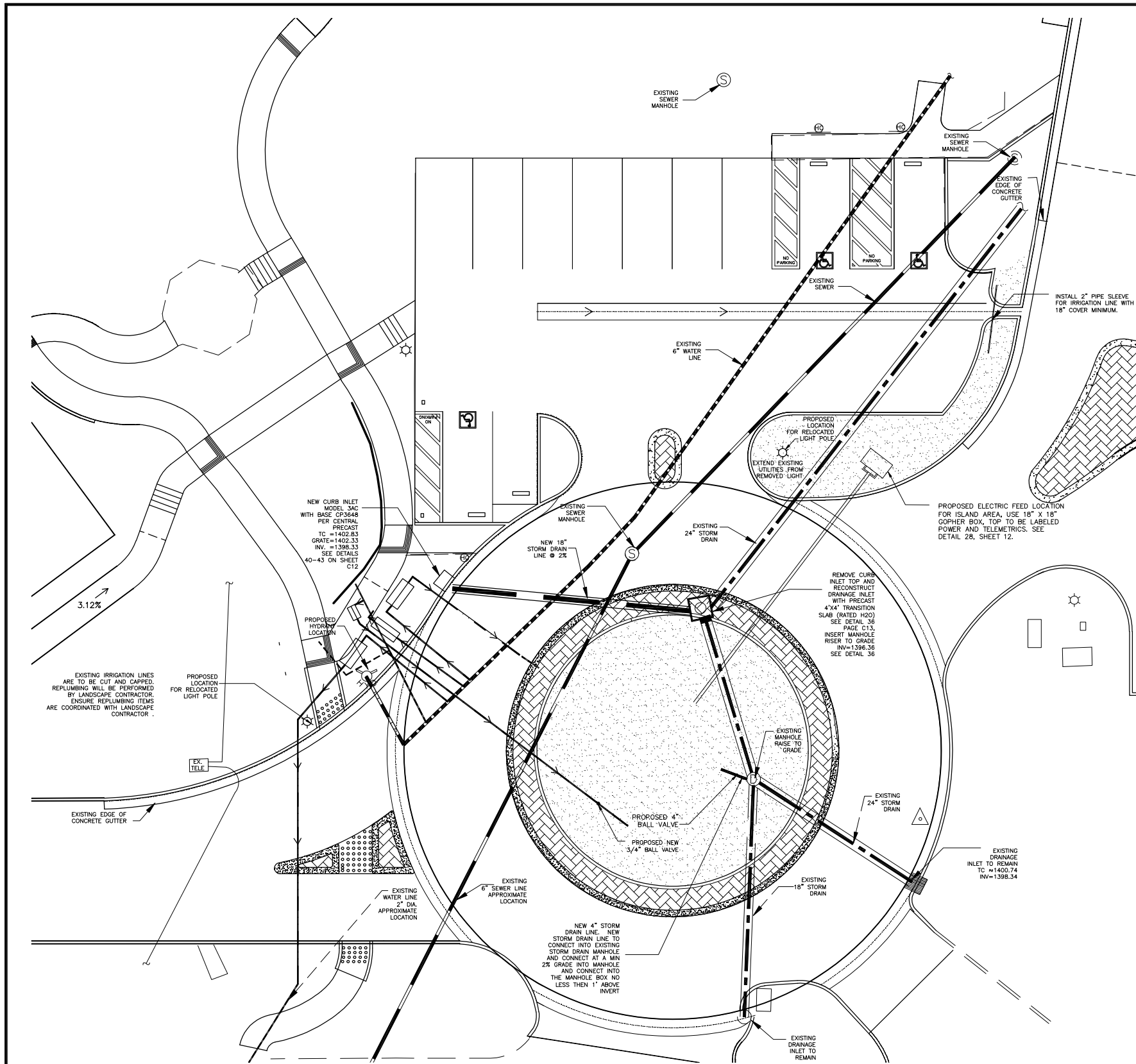
SUTTER LAKESIDE HOSPITAL
5176 HILL ROAD EAST
LAKEPORT CALIFORNIA 95453

GRADING PLAN
EXISTING SUTTER LAKESIDE HOSPITAL
5176 HILL ROAD EAST, LAKEPORT CA



RUZICKA ASSOCIATES
CONSULTING ENGINEERS
CIVIL ENGINEERING PLANNING SURVEYING
P.O. BOX 1189 2495 PARALLEL DRIVE
LAKEPORT CA. 95453 (707) 263-6155
FAX (707) 263-0788

DRAWN BY: EBH	DATE: August 27, 2008
CHECKED BY: TAH RCE: 53327	DRAWING NO.: ROUNDABOUT
JOB NO.: 04-5667.02	SHEET C5.1 OF



NEW WATER CONNECTION ENLARGEMENT

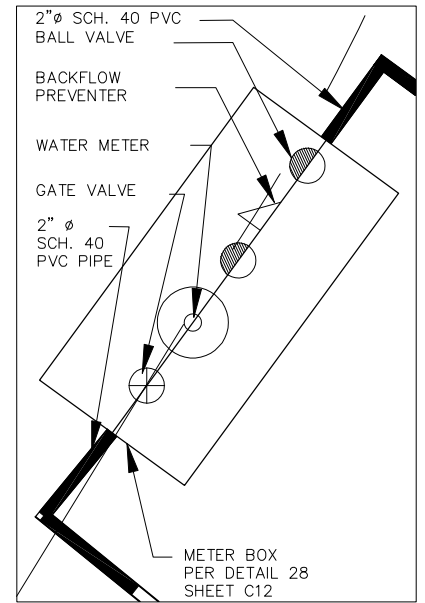
SCALE 1"=5'

LEGEND

- EXISTING WATER
- EXISTING SEWER
- EXISTING STORM
- EXISTING CURB
- EXISTING SIDEWALK
- EXISTING FLOWLINE
- EXISTING STRIPEING
- PROPOSED WATER
- PROPOSED STORM
- PROPOSED CURB
- PROPOSED SIDEWALK
- PROPOSED FLOWLINE
- PROPOSED STRIPEING

SCALE 1"=10'

FOR ALL TRENCHING INFORMATION SEE DETAILS 23 TO 26 AND USE WHERE APPLICABLE SEE DETAIL 27 FOR ADDITIONAL BACKFILLING INFORMATION.
 WHERE A PIPE CROSSING OCCURS SEE DETAIL 33 SHEET C12 FOR SPACING REQUIREMENTS.
 WHERE NEW WATER LINES ARE PLACED USE THRUST BLOCKS ACCORDINGLY WHEN NEW WATER LINES TURN PER DETAIL 35 SHEET C13. TREAT AS 4" PIPE MINIMUM.




NEW WATER CONTROL CONFIGURATION N.T.S.

NO.	DATE	DESCRIPTION	BY
2	6/10/08	REVISED SUBMITAL	EBH
1	5/29/08	REVISED SUBMITAL	EBH
0	5/19/08	INITIAL SUBMITAL	EBH

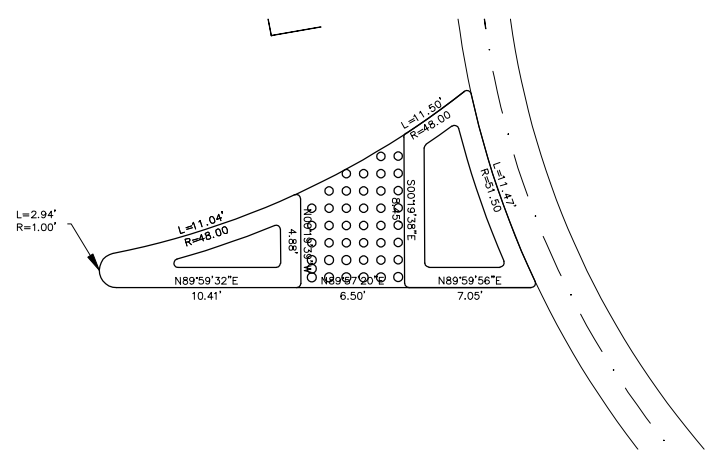
SUTTER LAKESIDE HOSPITAL
 5176 HILL ROAD EAST
 LAKEPORT CALIFORNIA 95453

UTILITY PLAN
 EXISTING SUTTER LAKESIDE HOSPITAL
 5176 HILL ROAD EAST, LAKEPORT CA

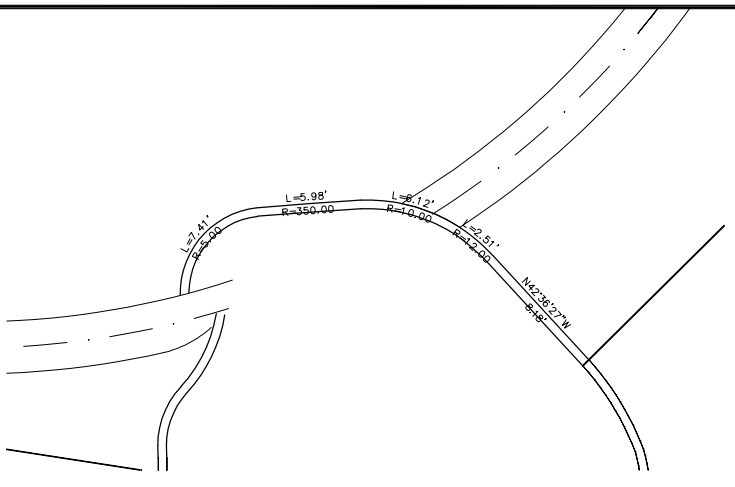


RUZICKA ASSOCIATES
 CONSULTING ENGINEERS
 CIVIL ENGINEERING PLANNING SURVEYING
 P.O. BOX 1189 2495 PARALLEL DRIVE
 LAKEPORT CA. 95453 (707) 263-6155
 FAX (707) 263-0788

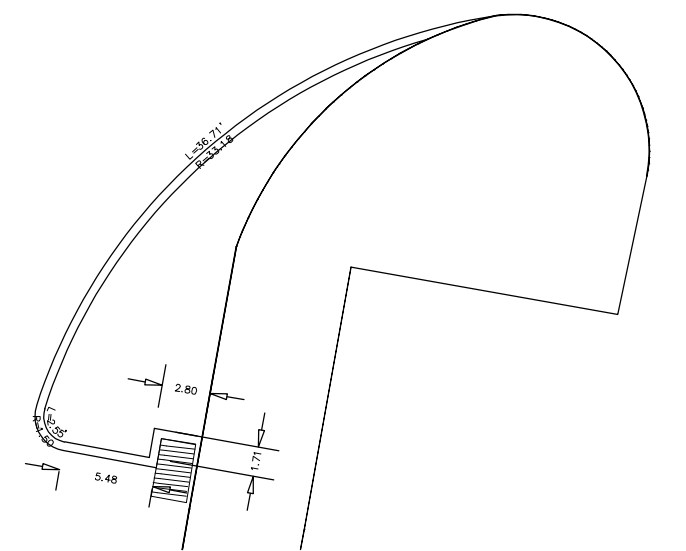
DRAWN BY: EBH	DATE: August 27, 2008
CHECKED BY: TAH RCE: 53327	DRAWING NO.: ROUNDABOUT
JOB NO.: 04-5667.02	SHEET C6.1 OF



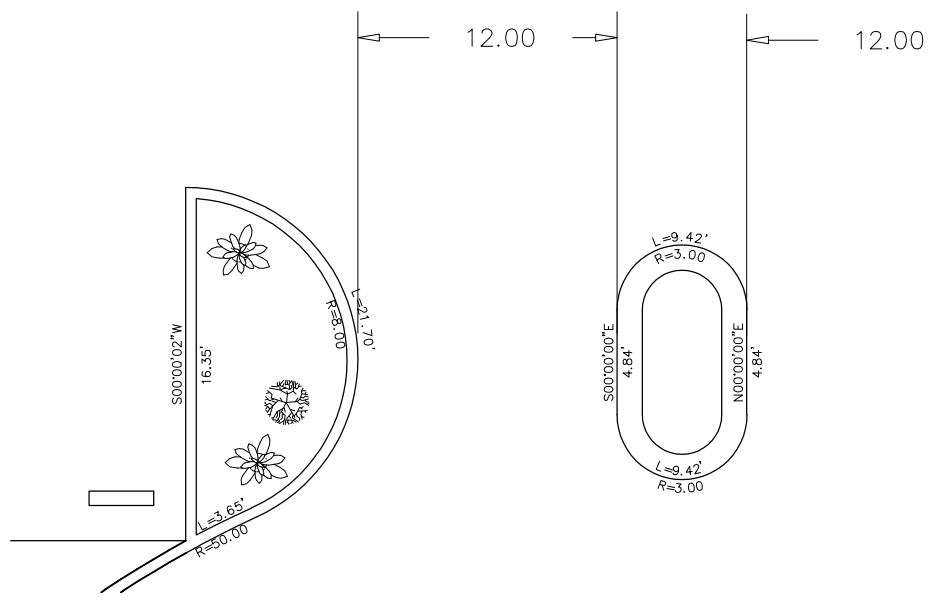
ENLARGEMENT AREA A-A SCALE 1"=5'



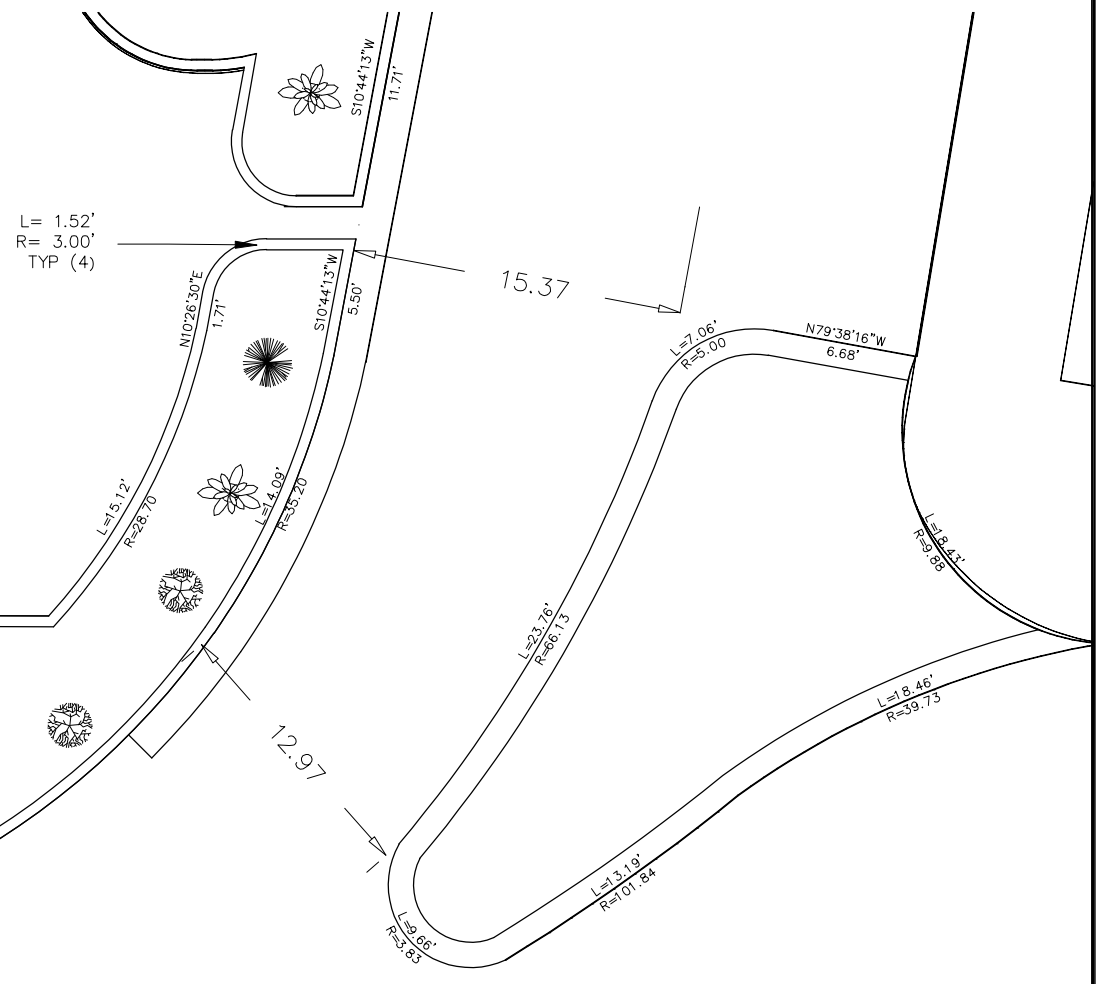
ENLARGEMENT AREA B-B SCALE 1"=5'



ENLARGEMENT AREA C-C BY EMERGENCY ROOM SCALE 1"=5'



ENLARGEMENT AREA D-D SCALE 1"=4'



NO.	DATE	DESCRIPTION	BY
2	6/10/08	REVISED SUBMITAL	EBH
1	5/29/08	REVISED SUBMITAL	EBH
0	5/19/08	INITIAL SUBMITAL	EBH

SUTTER LAKESIDE HOSPITAL
 5176 HILL ROAD EAST
 LAKEPORT CALIFORNIA 95453

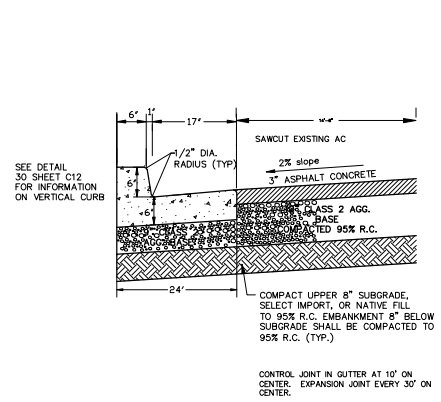
ENLARGED GEOMETRICS PLAN
 EXISTING SUTTER LAKESIDE HOSPITAL
 5176 HILL ROAD EAST, LAKEPORT CA



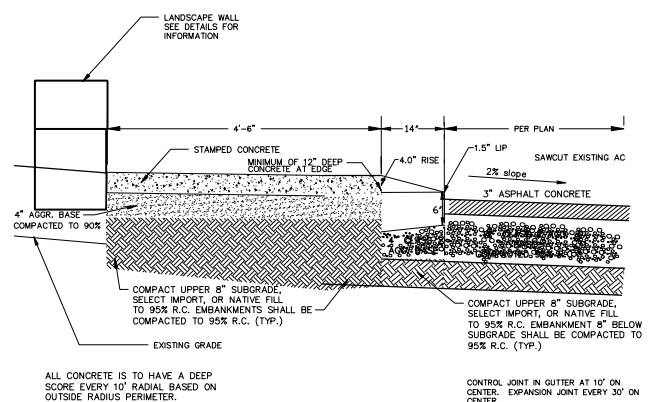
RUZICKA ASSOCIATES
 CONSULTING ENGINEERS
 CIVIL ENGINEERING PLANNING SURVEYING
 P.O. BOX 1189 2495 PARALLEL DRIVE
 LAKEPORT CA. 95453 (707) 263-6155
 FAX (707) 263-0788

DRAWN BY: EBH
 CHECKED BY: TAH
 RCE: 53327
 JOB NO.: 04-5667.02

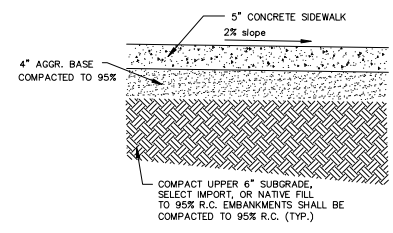
DATE: JUNE 10, 2008
 DRAWING NO.: ROUNDABOUT
 SHEET C7.2 OF



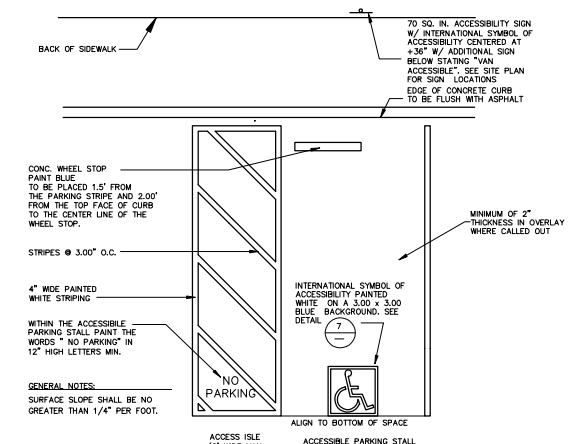
CURB/GUTTER SECTION 1
NOT TO SCALE



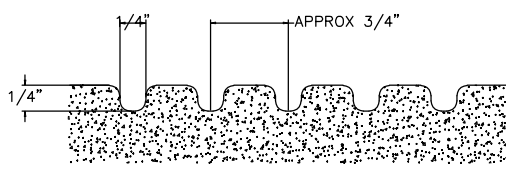
ROUNDBOUT SECTION 2
NOT TO SCALE



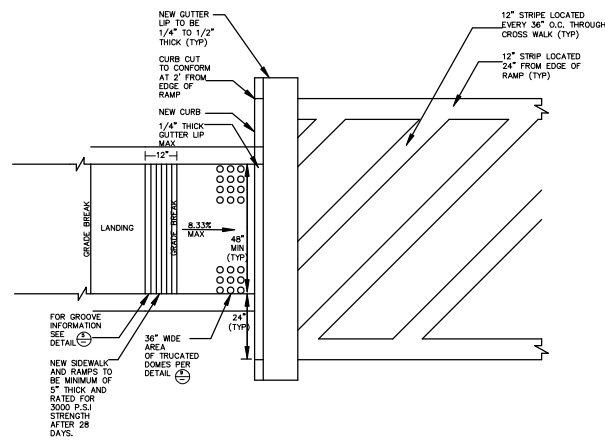
STANDARD SIDEWALK 3
NOT TO SCALE



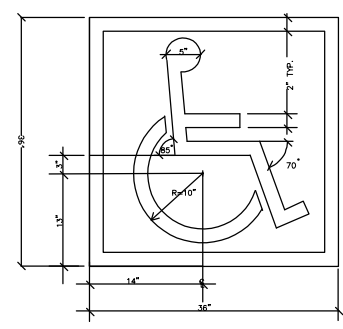
DISABLED PARKING STALL 4
NOT TO SCALE



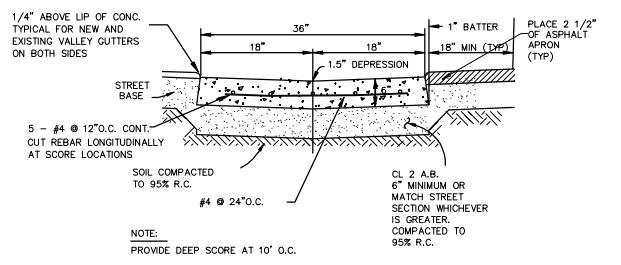
GROOVE DETAIL 5
NOT TO SCALE



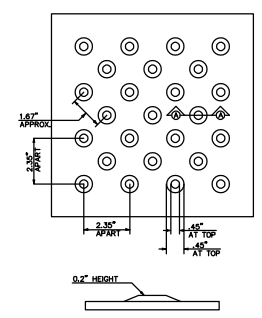
DISABLED ACCESSIBILITY RAMP 6
NOT TO SCALE



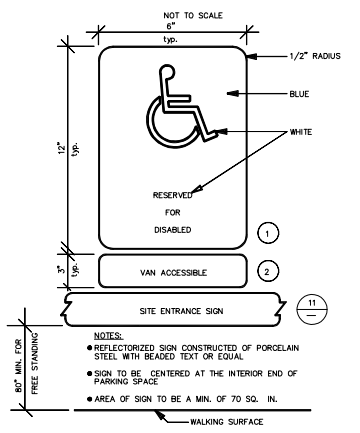
DISABLED PARKING EMBLEM 7
NOT TO SCALE



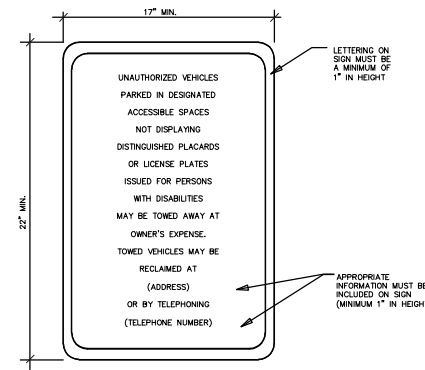
VALLEY GUTTER 8
NOT TO SCALE



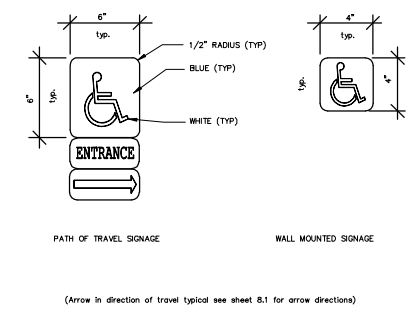
TRUNCATED DOMES 9
NOT TO SCALE



PARKING SIGNAGE 10
NOT TO SCALE



SITE ENTRANCE SIGN 11
NOT TO SCALE



DISABLED ACCESS ROUTE SIGNAGE 12
NOT TO SCALE

NO.	DATE	DESCRIPTION	BY
2	6/10/08	REVISED SUBMITAL	EBH
1	5/29/08	REVISED SUBMITAL	EBH
0	5/19/08	INITIAL SUBMITAL	EBH

SUTTER LAKESIDE HOSPITAL
5176 HILL ROAD EAST
LAKEPORT CALIFORNIA 95453

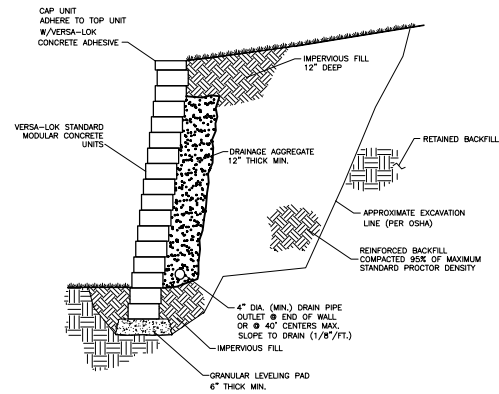
SITE DETAIL SHEET
EXISTING SUTTER LAKESIDE HOSPITAL
5176 HILL ROAD EAST, LAKEPORT CA



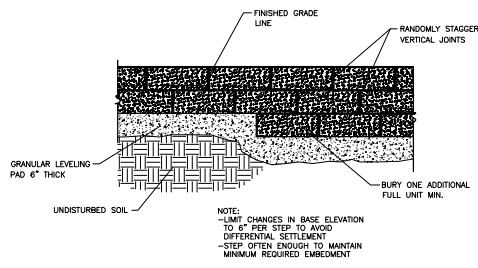
RUZICKA ASSOCIATES
CONSULTING ENGINEERS
CIVIL ENGINEERING PLANNING SURVEYING
P.O. BOX 1189 2495 PARALLEL DRIVE
LAKEPORT CA 95453 (707) 263-6155
FAX (707) 263-0768

DRAWN BY: EBH
CHECKED BY: TAH
RCE: 53327
JOB NO.: 04-5667.02

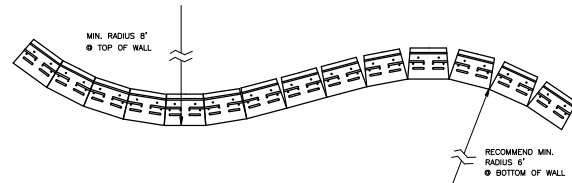
DATE: JUNE 10, 2008
DRAWING NO.: ROUNDBOUT
SHEET C10 OF



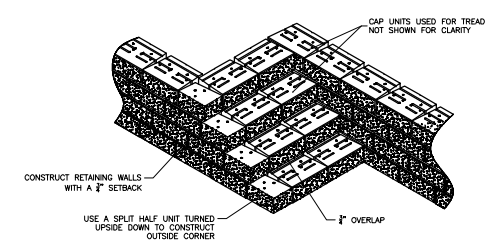
TYPICAL SECTION—REINFORCED RETAINING WALL 13



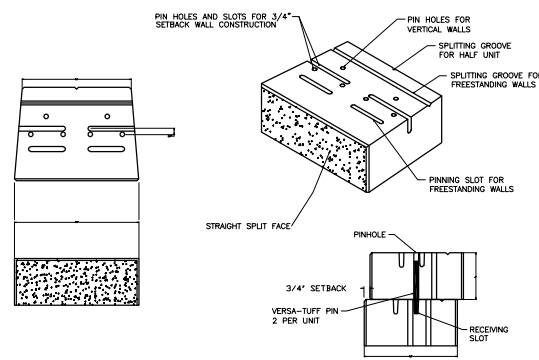
STEPPING BASE DETAIL 14



CURVE DETAIL 15
TYPICAL CURVES

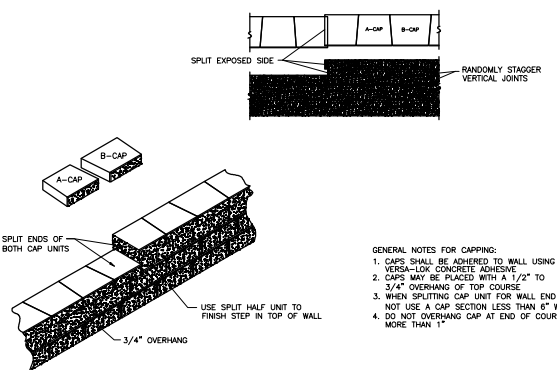


EXPOSED STAIRS DETAIL 16
ONE SIDE EXPOSED STAIRS



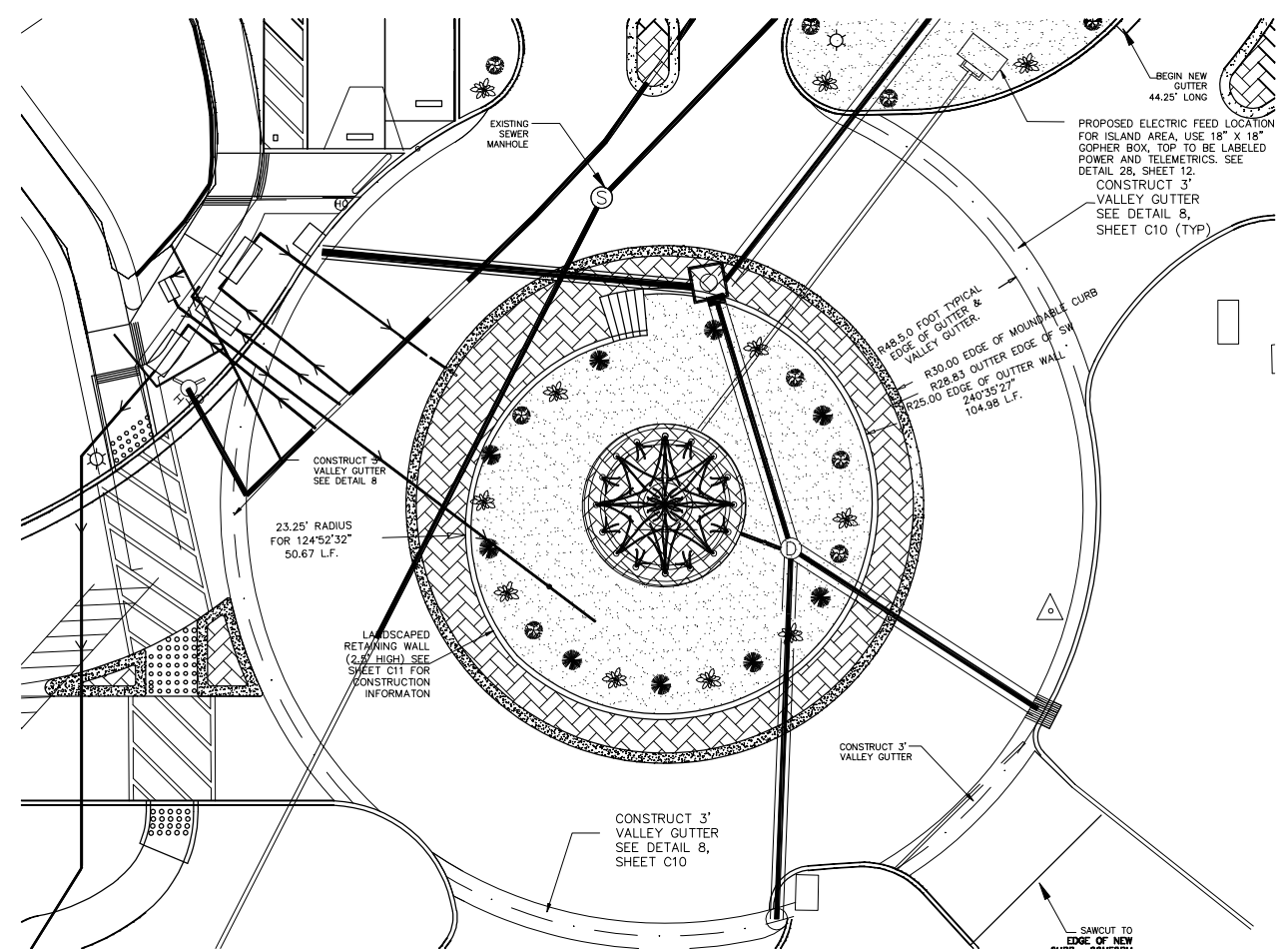
VERSA-LOK STANDARD UNIT/PINNING 17

FOR STRAIGHT WALLS, ALTERNATE A-CAP AND B-CAP



CAPPING DETAIL—PROFILE 18
STEP AT TOP OF WALL


- GENERAL NOTES FOR CAPPING:
1. CAPS SHALL BE ADHERED TO WALL USING VERSA-LOK CONCRETE ADHESIVE.
 2. CAPS MAY BE PLACED WITH A 1/2" TO 3/4" OVERHANG OF TOP COURSE.
 3. WHEN SPLITTING CAP UNIT FOR WALL END DO NOT USE A CAP SECTION LESS THAN 6" WIDE.
 4. DO NOT OVERHANG CAP AT END OF COURSE MORE THAN 1".



NO.	DATE	DESCRIPTION	BY
2	6/10/08	REVISED SUBMITAL	EBH
1	5/29/08	REVISED SUBMITAL	EBH
0	5/19/08	INITIAL SUBMITAL	EBH

SUTTER LAKESIDE HOSPITAL
5176 HILL ROAD EAST
LAKEPORT CALIFORNIA 95453

LANDSCAPE RETAINING WALL DETAIL
EXISTING SUTTER LAKESIDE HOSPITAL
5176 HILL ROAD EAST, LAKEPORT CA



RUZICKA ASSOCIATES
CONSULTING ENGINEERS
CIVIL ENGINEERING PLANNING SURVEYING
P.O. BOX 1189 2495 PARALLEL DRIVE
LAKEPORT CA. 95453 (707) 263-6155
FAX (707) 263-0788

DRAWN BY: EBH	DATE: JUNE 10, 2008
CHECKED BY: TAH RCE: 53327	DRAWING NO.: ROUNDABOUT
JOB NO.: 04-5667.02	SHEET C11 OF