

INDEX OF SHEETS

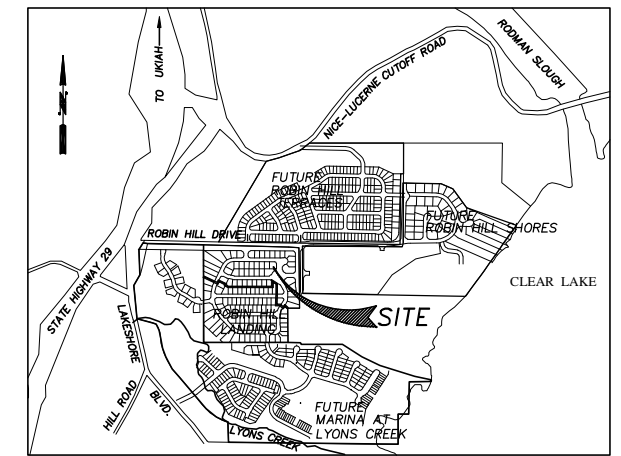
SHEET 1	COVER SHEET
SHEET 2	CONSTRUCTION NOTES
SHEET 3	ROAD SECTIONS
SHEET 4	UTILITY PLAN UNIT 1
SHEET 5	ROAD GEOMETRY
SHEET 6	ROAD & DRAINAGE LAYOUT UNIT 1 ROBIN HILL (NORTH)
SHEET 7	ROAD & DRAINAGE LAYOUT UNIT 1 ROBIN HILL (EAST)
SHEET 8	ROAD & DRAINAGE LAYOUT UNIT 1 MEADOWLARK CIRCLE (NORTH)
SHEET 9	ROAD & DRAINAGE LAYOUT UNIT 1 MOUNTAIN QUAIL DRIVE
SHEET 10	ROAD & DRAINAGE LAYOUT UNIT 1 MOUNTAIN QUAIL DRIVE (ENTRANCE)
SHEET 11	ROAD & DRAINAGE LAYOUT UNIT 1 ORIOLE DRIVE & MEADOWLARK DRIVE
SHEET 12	ROAD & DRAINAGE LAYOUT UNIT 1 MEADOWLARK CIRCLE (SOUTH)
SHEET 13	DRAINAGE TO WETLANDS
SHEET 14	DRAINAGE TO WETLANDS
SHEET 15	DRAINAGE TO WETLANDS
SHEET 16	DRAINAGE LAYOUT UNIT 1 ONSITE DRAINAGE LOTS 1-5
SHEET 17	WATER & SEWER LAYOUT UNIT 1 ROBIN HILL DRIVE (NORTH)
SHEET 18	WATER & SEWER LAYOUT UNIT 1 ROBIN HILL DRIVE (EAST)
SHEET 19	WATER & SEWER LAYOUT UNIT 1 MEADOWLARK CIRCLE (NORTH)
SHEET 20	WATER & SEWER LAYOUT UNIT 1 MOUNTAIN QUAIL DRIVE (INTERIOR)
SHEET 21	WATER & SEWER LAYOUT UNIT 1 MEADOWLARK CIRCLE (SOUTH)
SHEET 22	WATER & SEWER LAYOUT UNIT 1
SHEET 23	WATER & SEWER LAYOUT UNIT 1 ORIOLE & MEADOWLARK DRIVE
SHEET 24	WATER & SEWER LAYOUT UNIT 1 ROBIN HILL DRIVE AND AVENUE "A"
SHEET 25-28	ROAD & DRAINAGE DETAILS
SHEET 29-30	WATER DETAILS
SHEET 31	SEWER DETAILS
SHEET 32	EROSION CONTROL PLANS
SHEET 33	LOT GRADING UNIT ONE
SHEET 34	FOUNDATION DRAIN DETAILS
SHEET 35	EROSION CONTROL DETAILS
SHEET 36	SIGNAGE, LIGHTING & STRIPING

LANDSCAPE PLANS BY "GREEN VALLEY CONSULTING ENGINEERS" TO BE REFERRED TO AS STAND ALONE SET

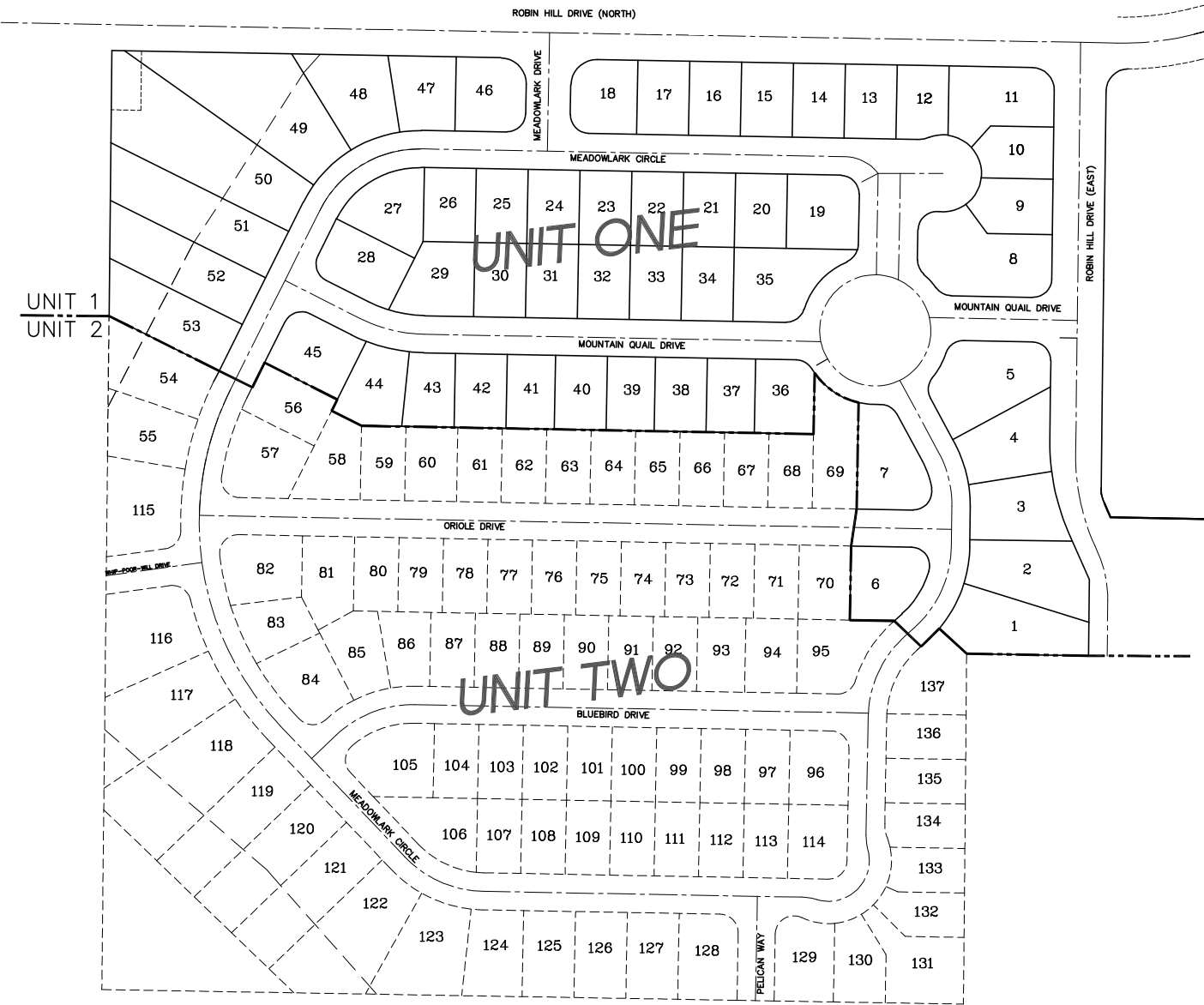
ABBREVIATIONS:

ARV	AIR RELIEF VALVE	R	RADIUS
ASSY.	ASSEMBLY	SDMH	STORM DRAIN MANHOLE
BC	BOTTOM OF CULVERT	TB	THRUST BLOCKING
B.O.	BLOWOFF	TC	TOP OF CURB
BFM	BOTTOM FORCEMAIN	T.G.C.E.	TEMPORARY GRAVEL CONSTRUCTION ENTRANCE
BOC	BACK OF CURB	TS	TOP OF SEWER
CB	CATCH BASIN	T.S.&V.	TAPPING SLEEVE AND VALVE
CL	CENTERLINE	TYP.	TYPICAL
CTR.	CENTER	TW	TOP OF WATER
D.I.	DRAINAGE INLET	USPS	UNITED STATES POSTAL SERVICE
ELEV	ELEVATION	W/	WITH
EX	EXISTING		
EXIST.	EXISTING		
EOP	EDGE OF PAVEMENT		
EOW	EDGE OF WALK		
FH	FIRE HYDRANT		
FIN.	FINISHED		
GV	GATE VALVE		
G.V.B.&C.	GATE VALVE BOX AND COVER		
G.S.P.	GALVANIZED STEEL PIPE		
GRND.	GROUND		
GAL.	GALLOW		
HDPE	HIGH DENSITY POLYETHYLENE		
I.E.	INVERT ELEVATION		
L.C.S.D.	LAKE COUNTY STANDARD DETAIL		
PROP.	PROPOSED		
P	PAVEMENT		
PVMT.	PAVEMENT		

IMPROVEMENT PLANS FOR ROBIN HILL LANDING UNIT 1



VICINITY MAP
NTS



UTILITY INFORMATION

COMPANY	CONTACT	PHONE #
P.G.&E. 2641 N. STATE ST. UKIAH, CA. 95402	DENI LEE	707-468-3736
AT&T 305 W. STEVENSON ST. UKIAH, CA. 95402	MAUREN DEVANY	707-468-2637
NOR-COAST UTILITY DESIGN, INC. 771 JONI COURT WINDSOR, CA. 95492	STEVEN KRINSKY	707-838-4492
LAKE COUNTY PUBLIC WORKS DEPARTMENT 255 N. FORBES ST. 3RD FLOOR	KEN BROWN	707-263-2221
LAKE COUNTY SPECIAL DISTRICTS 2304 MAIN STREET LAKEPORT, CA. 95453	JILL SHAUL	707-263-0119
LAKE COUNTY FIRE PROTECTION DISTRICT 445 N. MAIN ST. LAKEPORT, CA. 95453	KENNETH D. WELLS	707-263-4396
MEDIACOM CABLE 13221 E. HWY. 20 CLEARLAKE OAKS, CA. 95423	CRAG BILLINGS	707-998-1170

800-227-2600

CALL BEFORE YOU DIG

BASIS OF BEARING
THE BASIS OF BEARING FOR THIS SITE WAS TAKEN FROM ALONG THE WEST LINE OF SECTION 31 NOTED AS N00°31' 53"E PER << BK. 3 of RECORD of SURVEYS PAGES 63-67>> AND AS FOUND MONUMENTED

BENCHMARK
RM13 CALIFORNIA STATE LAND COMMISSION DISK, STAMPED "RODMAN 1965", ON LUCERNE CUTOFF ROAD, NORTH-NORTHEAST OF LAKEPORT, ON THE NORTHWEST CORNER OF THE CONCRETE BRIDGE OVER MIDDLE CREEK. - ELEV=1333.36

APPROVED:

G.R. SHAUL, PUBLIC WORKS DIRECTOR DATE

MARK DELLINGER, SPECIAL DISTRICTS ADMINISTRATOR DATE

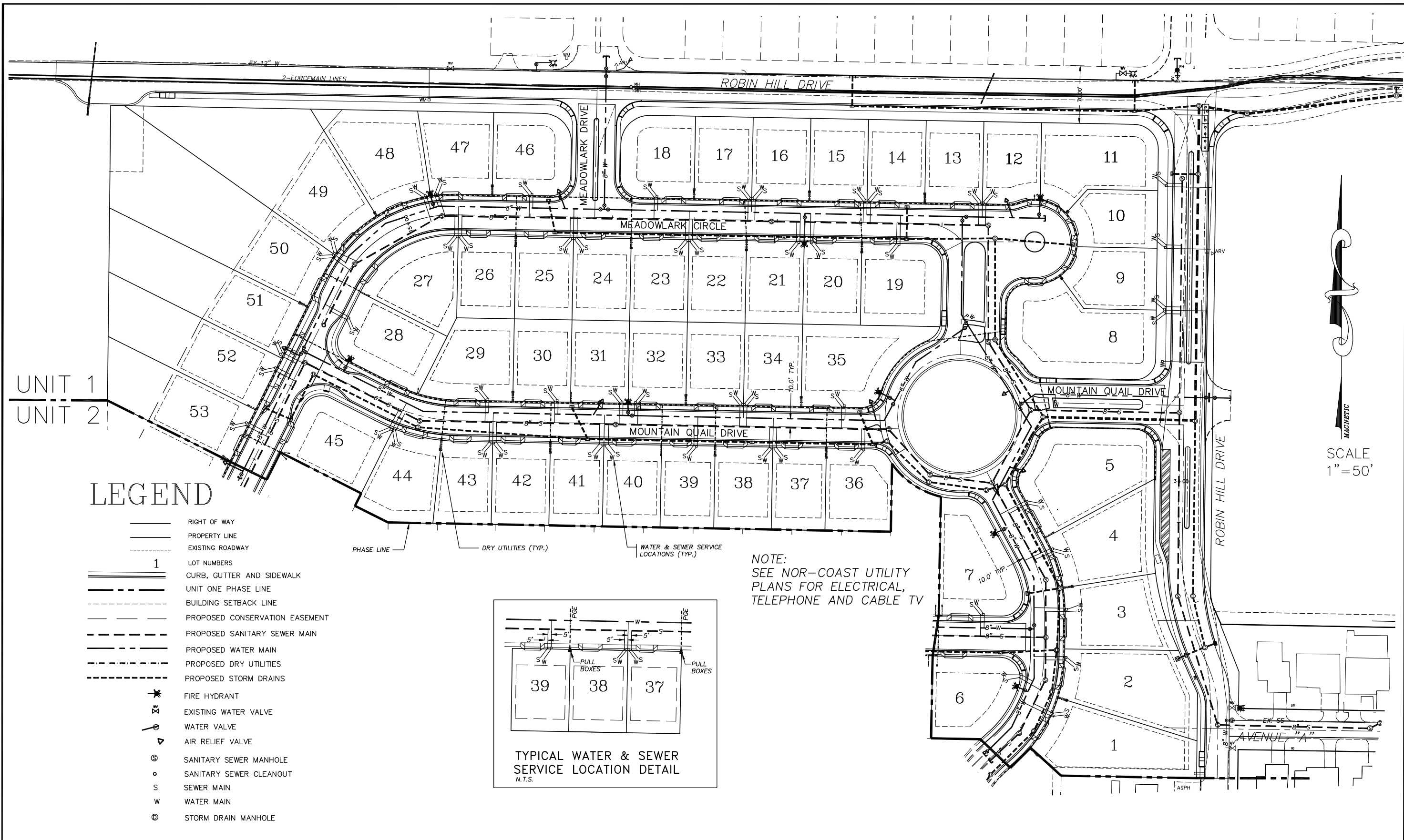
RH VENTURES LP
880 SECOND STREET
SANTA ROSA, CA. 95404

ROBIN HILL LANDING
UNIT ONE
COVER SHEET

RUZICKA ASSOCIATES
CONSULTING ENGINEERS
CIVIL ENGINEERING PLANNING SURVEYING
P.O. BOX 1189 2495 PARALLEL DRIVE
LAKEPORT CA, 95453 (707) 263-6155
FAX (707) 263-0788

DRAWN BY:	RLB	DATE:	11/19/07
CHECKED BY:	THOMAS ALAN HUNT RCE C 53327	DRAWING NO.:	5722-CONST-REV-2
JOB NO.:	04-5722.01	SHEET	1 of 36

C:\Engineering\Land Projects\2005\045722\Area\CONSTRUCTION\5722-CONST-REV-2.dwg



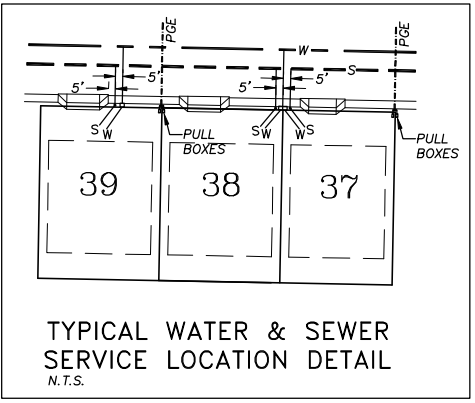
UNIT 1
UNIT 2

LEGEND

- RIGHT OF WAY
- PROPERTY LINE
- EXISTING ROADWAY
- 1** LOT NUMBERS
- CURB, GUTTER AND SIDEWALK
- UNIT ONE PHASE LINE
- BUILDING SETBACK LINE
- PROPOSED CONSERVATION EASEMENT
- PROPOSED SANITARY SEWER MAIN
- PROPOSED WATER MAIN
- PROPOSED DRY UTILITIES
- PROPOSED STORM DRAINS
- FIRE HYDRANT
- EXISTING WATER VALVE
- WATER VALVE
- AIR RELIEF VALVE
- SANITARY SEWER MANHOLE
- SANITARY SEWER CLEANOUT
- SEWER MAIN
- WATER MAIN
- STORM DRAIN MANHOLE

PHASE LINE DRY UTILITIES (TYP.) WATER & SEWER SERVICE LOCATIONS (TYP.)

NOTE:
SEE NOR-COAST UTILITY
PLANS FOR ELECTRICAL,
TELEPHONE AND CABLE TV



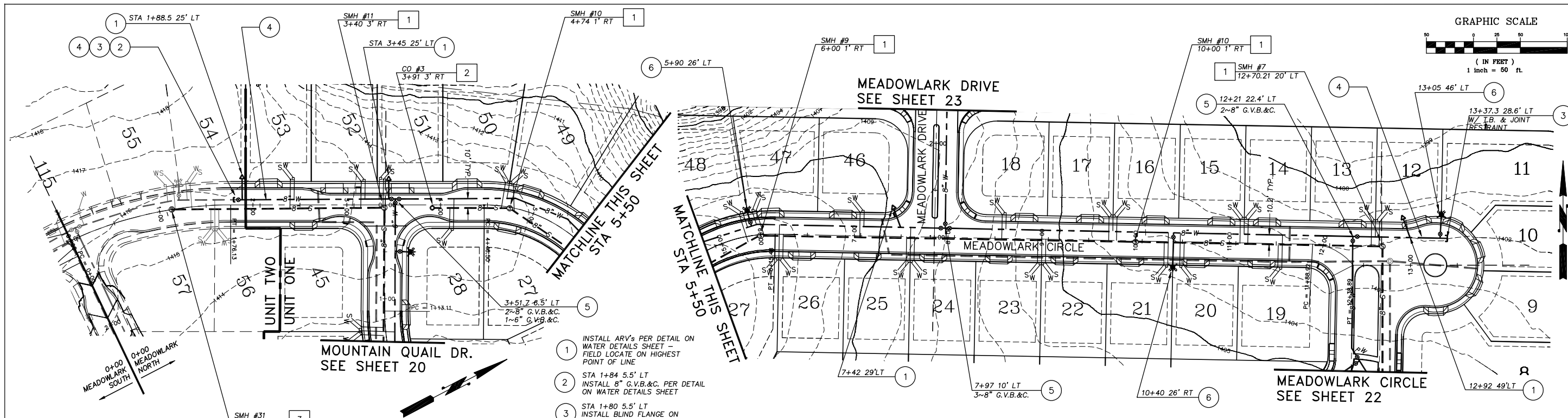
MAGNETIC
SCALE
1"=50'

RH VENTURE LP
880 SECOND STREET
SANTA ROSA, CA. 95404

ROBIN HILL LANDING UNIT ONE COMPOSITE UTILITY LOCATIONS

R RUZICKA ASSOCIATES
CONSULTING ENGINEERS
CIVIL ENGINEERING PLANNING SURVEYING
P.O. BOX 1189
2495 PARALLEL DR.
LAKEPORT CA. 95453
(707) 263-6155 FAX (707) 263-0768

DRAWN BY: RLB	DATE: 11/19/07
CHECKED BY: THOMAS ALAN HUNT RCE C 53327	DRAWING NO.: 5722-CONST-REV-2
JOB NO.: 04-5722.01	SHEET 4 OF 35

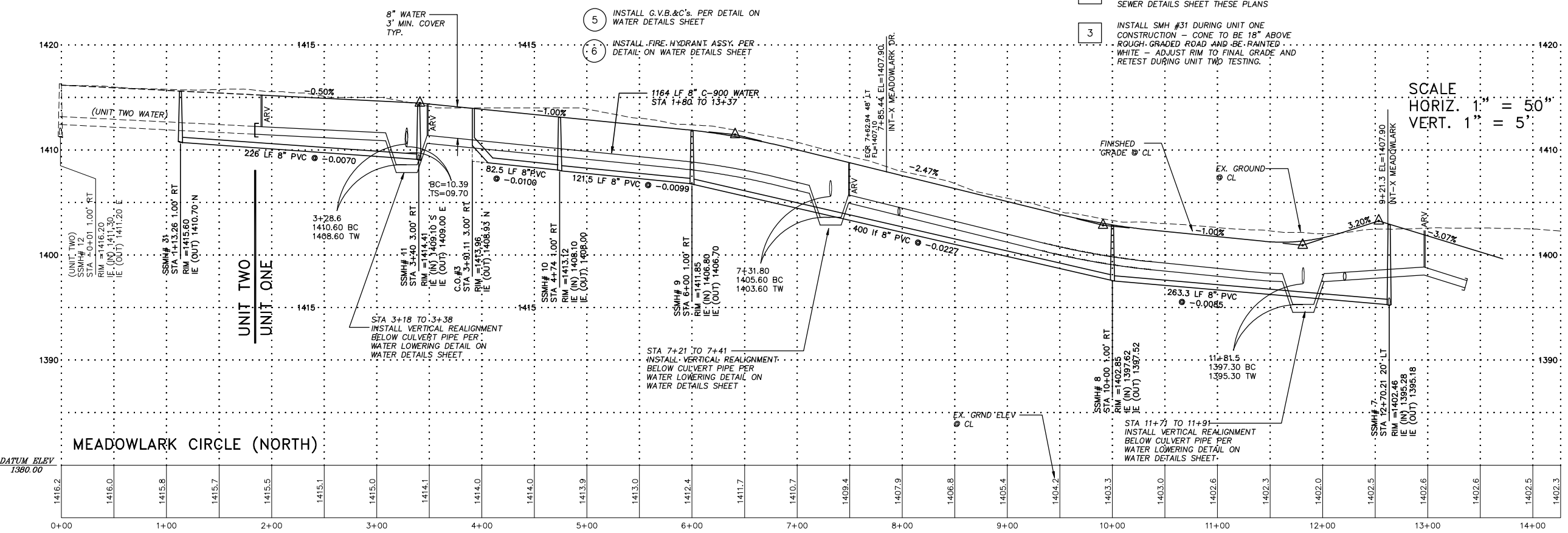
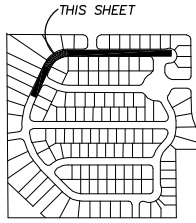


- 1 INSTALL ARV'S PER DETAIL ON WATER DETAILS SHEET - FIELD LOCATE ON HIGHEST POINT OF LINE
- 2 STA 1+84 5.5' LT INSTALL 8" G.V.B.&C. PER DETAIL ON WATER DETAILS SHEET
- 3 STA 1+80 5.5' LT INSTALL BLIND FLANGE ON 5 FT STUB W/T.B
- 4 CONTRACTOR SHALL RESTRAIN LINE FOR A DISTANCE OF 60 FT FROM THE BLIND FLANGE TERMINATION - THRUST BLOCKING AT FLANGE (TYP.)
- 5 INSTALL G.V.B.&C'S PER DETAIL ON WATER DETAILS SHEET
- 6 INSTALL FIRE HYDRANT ASSY. PER DETAIL ON WATER DETAILS SHEET

BEND SCHEDULE

4+78 10.5' LT	22-1/2' BEND
5+33.7 11.5' LT	22-1/2' BEND
5+97 11.5' LT	22-1/2' BEND

- 1 INSTALL SANITARY SEWER MANHOLE PER STANDARD MANHOLE SEWER DETAIL ON SEWER DETAILS SHEET THESE PLANS
- 2 INSTALL SANITARY SEWER CLEANOUT PER STANDARD CLEANOUT SEWER DETAIL ON SEWER DETAILS SHEET THESE PLANS
- 3 INSTALL SMH #31 DURING UNIT ONE CONSTRUCTION - CONE TO BE 18" ABOVE ROUGH-GRADED ROAD AND BE PAINTED WHITE - ADJUST RIM TO FINAL GRADE AND RETEST DURING UNIT TWO TESTING.



SCALE
 HORIZ. 1" = 50'
 VERT. 1" = 5'

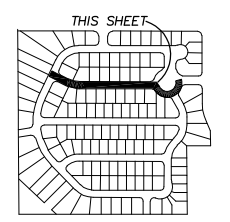
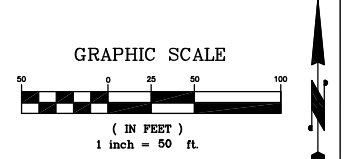
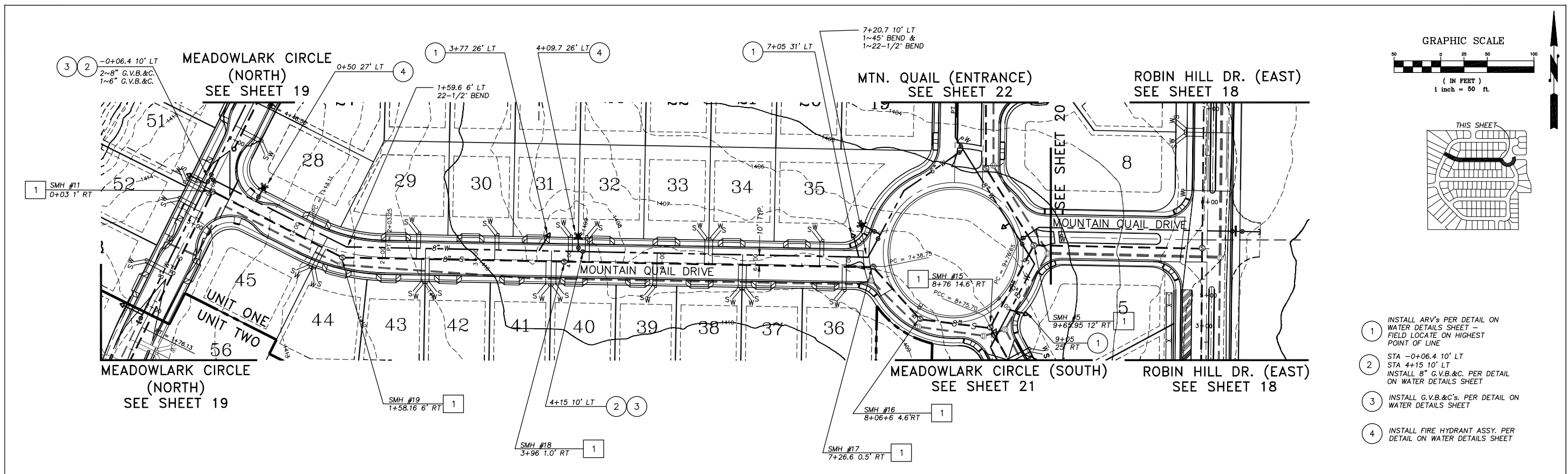
NO.	DATE	DESCRIPTION	BY

RH VENTURE LP
 880 SECOND STREET
 SANTA ROSA, CA. 95404

ROBIN HILL LANDING
 WATER & SEWER LAYOUT

RUZICKA ASSOCIATES
 CONSULTING ENGINEERS
 CIVIL ENGINEERING PLANNING SURVEYING
 P.O. BOX 1189
 2495 PARALLEL DR.
 LAKEPORT CA 95453
 (707) 263-6155 FAX (707) 263-0768

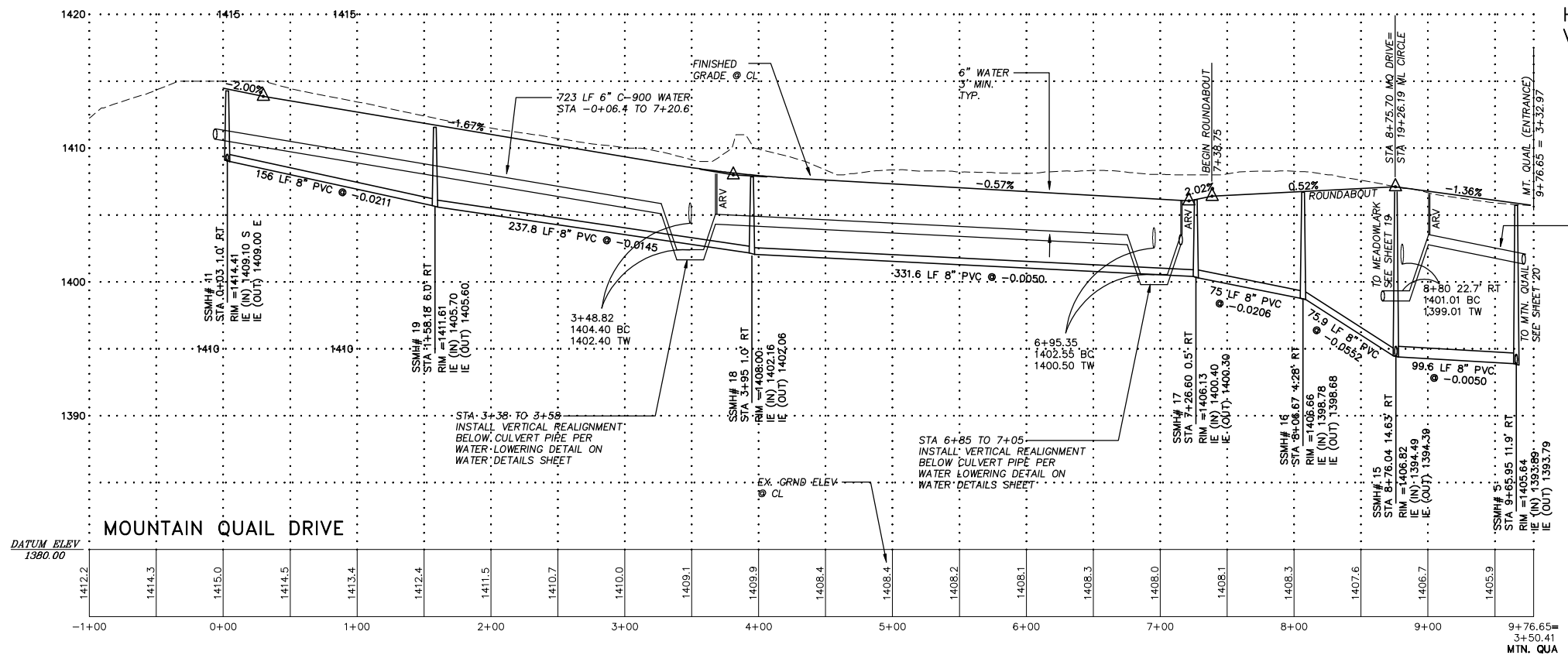
DRAWN BY:	RLB	DATE:	11/19/07
CHECKED BY:	THOMAS ALAN HUNT RCE C 53327	DRAWING NO.:	5722-CONST-REV-2
JOB NO.:	04-5722.01	SHEET	19 OF 36



- ① INSTALL ARV'S PER DETAIL ON WATER DETAILS SHEET - FIELD LOCATE ON HIGHEST POINT OF LINE
- ② STA -0+06.4 10' LT
STA 4+15 10' LT
INSTALL 8" G.V.B.&C. PER DETAIL ON WATER DETAILS SHEET
- ③ INSTALL G.V.B.&C'S. PER DETAIL ON WATER DETAILS SHEET
- ④ INSTALL FIRE HYDRANT ASSY. PER DETAIL ON WATER DETAILS SHEET

SCALE
HORIZ. 1" = 50"
VERT. 1" = 5'

- ① INSTALL SANITARY SEWER MANHOLE PER STANDARD MANHOLE SEWER DETAIL ON SEWER DETAILS SHEET THESE PLANS



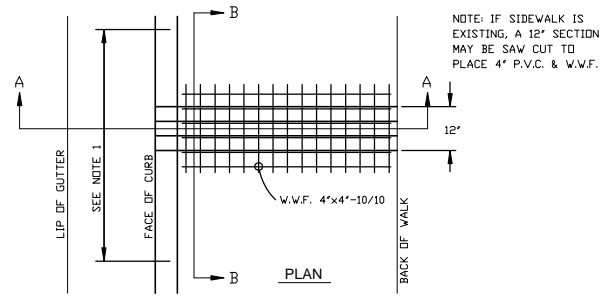
NO.	DATE	DESCRIPTION	BY

RH VENTURE LP
880 SECOND STREET
SANTA ROSA, CA. 95404

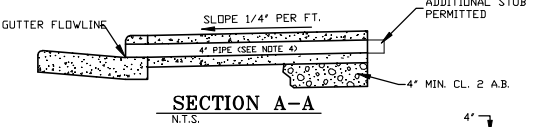
ROBIN HILL LANDING WATER & SEWER LAYOUT

RUZICKA ASSOCIATES
CONSULTING ENGINEERS
CIVIL ENGINEERING PLANNING SURVEYING
P.O. BOX 1189
2495 PARALLEL DR.
LAKEPORT CA, 95453
(707) 263-6155 FAX (707) 263-0768

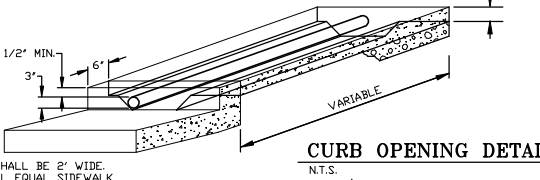
DRAWN BY:	RLB	DATE:	11/19/07
CHECKED BY:	THOMAS ALAN HUNT RCE C 53327	DRAWING NO.:	5722-CONST-REV-2
JOB NO.:	04-5722.01	SHEET	20 of 36



NOTE: IF SIDEWALK IS EXISTING, A 12' SECTION MAY BE SAW CUT TO PLACE 4' P.V.C. & W.W.F.



SECTION A-A
N.T.S.



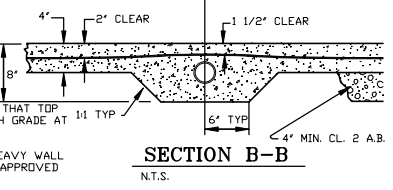
CURB OPENING DETAIL
N.T.S.

NOTES:
WIRE MESH SHALL BE 2\"/>

ON SITE DRAINAGE AND LOCATION OF CURB OUTLETS SHALL BE BY THE OWNER TO THE SATISFACTION OF THE COUNTY.

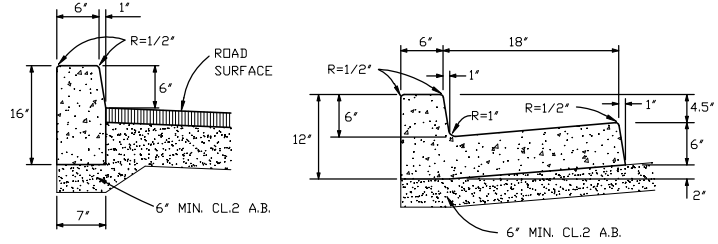
DRAIN PIPE SHALL BE INSTALLED SO THAT TOP OF PIPE IS 2 1/2\"/>

SIDEWALK DRAIN TO BE 4\"/>

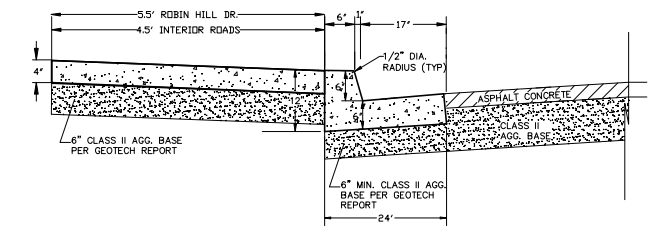


SECTION B-B
N.T.S.

CURB OUTLET TYPE "A" STD. NO. 309

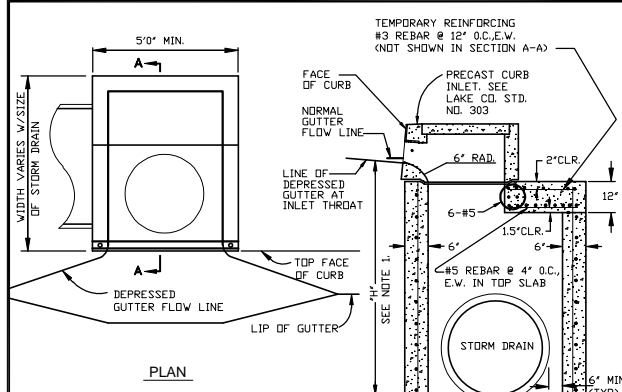


STANDARD VERTICAL CURB
STANDARD CURB AND GUTTER



TYPICAL CURB, GUTTER, & SIDEWALK
N.T.S.

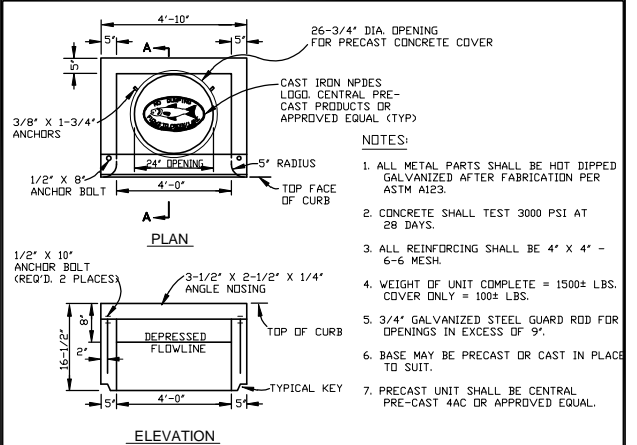
- L.C.S.D. STD. NO. 211-A
- CURB, GUTTER & SIDEWALK NOTES:
- CONCRETE SHALL BE CLASS A, 1" MAXIMUM AGGREGATE SIZE PER CALTRANS STANDARD SPECIFICATIONS AND SHALL CONTAIN NOT LESS THAN 6 SACKS OF CEMENT PER CUBIC YARD. NO COLOR OR LAMP-BLACK SHALL BE ADDED UNLESS OTHERWISE SHOWN ON THE PLANS OR SPECIAL PROVISIONS.
 - EXPANSION JOINTS, 1/2" INCH WIDE, SHALL BE PLACED AT BOTH SIDES OF DRIVEWAY APPROACHES, AT EACH SIDE OF DRAINAGE STRUCTURES, AT ENDS OF CURB RETURNS. EXPANSION JOINTS SHALL BE ALIGNED THROUGH ADJACENT CURB, GUTTER AND SIDEWALK.
 - CONTROL JOINTS SHALL BE SAWS TO THE DEPTHS LISTED IN TABLE 1 AND SHALL BE PLACED AT SPACING EQUAL TO WIDTH OF CURB AND SIDEWALK. CONTROL JOINTS SHALL BE INSTALLED AT CENTER OF ALL DRIVEWAY APPROACHES OVER 20' WIDE.
 - SUBGRADE SHALL BE COMPACTED TO AT LEAST 90% RELATIVE COMPACTION IN THE TOP 12 INCHES.
 - EXISTING CONCRETE TO BE REPLACED SHALL BE REMOVED AT EXPANSION JOINTS, CONTROL JOINTS OR SCORE MARKS. CONCRETE REMOVED AT CONTROL JOINTS OR SCORE MARKS SHALL BE SAWCUT. SAWCUTS SHALL BE FULL DEPTH.
 - NO UTILITY BOXES OR POLES SHALL BE PLACED IN THE SIDEWALK AREA WITHOUT THE WRITTEN APPROVAL OF THE D.P.V. DIRECTOR.
 - NEW WORK SHALL MATCH EXISTING IN SCORE PATTERN AND COLOR.
 - NO CONCRETE SHALL BE PLACED UNTIL AFTER THE COUNTY INSPECTOR HAS APPROVED FORMS AND SUBGRADE.
 - ALL EXPOSED EDGES SHALL BE ROUNDED WITH 1/2" INCH RADIUS TOOL.
 - ALL SURFACES SHALL BE FINISHED WITH A MEDIUM BROOM FINISH. (SEE CURB, GUTTER AND SIDEWALK DETAIL STD. NO. 211-A)



TYPE "B" CATCH BASIN STD. NO. 301



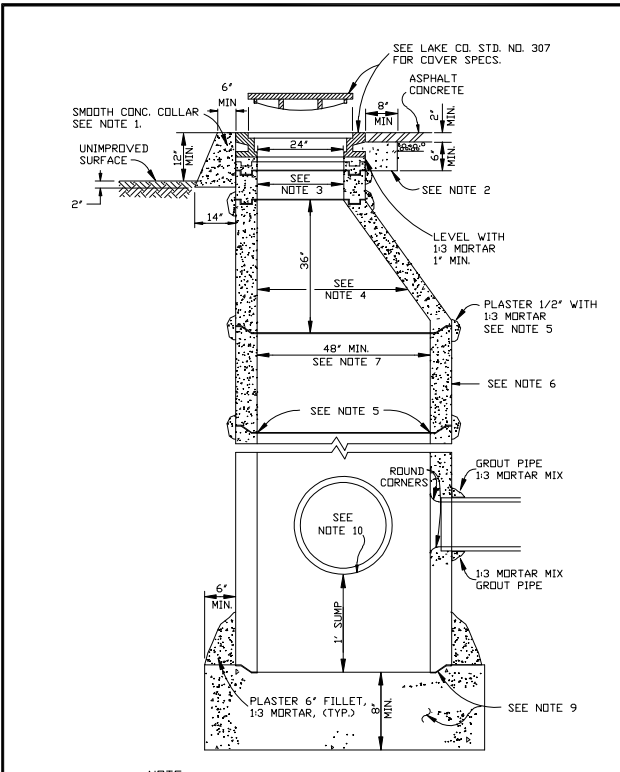
SCALE: NONE DRAWN: CLG CHK: JLW, TEM APPV: GRS DATE: JUNE 2004



PRE CAST CURB INLET STD. NO. 303



SCALE: NONE DRAWN: CLG CHK: JLW, TEM APPV: GRS DATE: JUNE 2004



STORM DRAIN MANHOLE STD. NO. 306-A



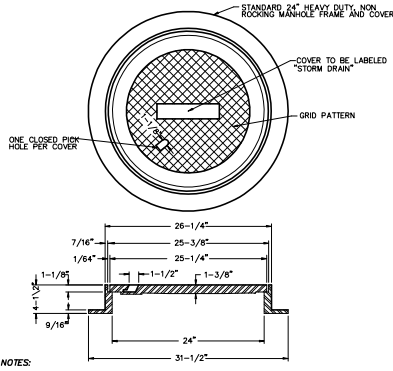
SCALE: NONE DRAWN: CLG CHK: JLW, TEM APPV: GRS DATE: JUNE 2004

- NOTES:
- WHEN MANHOLES ARE INSTALLED IN UNIMPROVED AREAS, THE TOP OF THE COVER SHALL BE A MINIMUM OF 1 FOOT ABOVE ADJACENT GRADE AND CONCRETE COLLAR SHALL BE PROVIDED. CONCRETE COLLAR SHALL BE CLASS 1 CONCRETE (6-SACK MIX). SEE DETAIL.
 - WHEN MANHOLES ARE INSTALLED IN PAVED AREAS, UNPAVED SHOULDERS OR UNPAVED ROADS, A CONCRETE COLLAR SHALL BE PROVIDED. SEE DETAIL.
 - PROVIDE A MINIMUM OF ONE 3" AND ONE 6" GRADE ADJUSTMENT RING AT TOP OF MANHOLE. MAXIMUM HEIGHT OF GRADE ADJUSTMENT RINGS SHALL NOT EXCEED 20".
 - CONE SECTION SHALL BE ECCENTRIC, WITH STEPS ON THE VERTICAL SIDE. STEPS SHALL BE PER CALTRANS STD. PLAN D74C. WHERE DEPTH IS NOT SUFFICIENT TO PROVIDE CONE SECTION, REDUCER SLAB PER LAKE CO. STD. NO. 308 SHALL BE USED.
 - ALL JOINTS SHALL BE SEALED WITH RAM-NEK JOINT COMPOUND, 1/3 MORTAR MIX, OR APPROVED EQUAL. WET BOTH TONGUE AND RING BEFORE APPLYING MORTAR AND SETTING RING. WIPE INSIDE EDGE OF JOINTS SMOOTH AND PROVIDE POINTED JOINT. PLASTER OUTSIDE OF JOINT WITH 1/4" LAYER OF MORTAR.
 - PRECAST MANHOLE MATERIAL SHALL BE MANUFACTURED TO ASTM SPECIFICATION C-478. ALL SECTIONS OF MANHOLE SHALL BE IDENTICAL MAKE AND MANUFACTURER. PRECAST MANHOLE SHALL BE CENTRAL PRE-CAST MODEL M48E OR APPROVED EQUAL.
 - DEPTH SHALL BE MEASURED FROM RIM TO FLOWLINE OF OUTLET PIPE. MANHOLES OVER 7 FEET IN DEPTH, OR WITH A PIPE GREATER THAN 36" INSIDE DIAMETER, SHALL BE 5 FEET INSIDE DIAMETER.
 - LAKE CO. STD. NO. 306 SHALL NOT BE USED FOR MANHOLES LESS THAN 3 FEET IN DEPTH, PIPES GREATER THAN 60" INSIDE DIAMETER, OR FOR MANHOLES WITH MORE THAN 3 PIPE CONNECTIONS.
 - BASE SHALL BE CAST IN PLACE TO FULL THICKNESS SHOWN. BASE SHALL BE CONSTRUCTED OF CLASS 1 CONCRETE (6-SACK MIX) AND SHALL BE PLACED AGAINST UNDISTURBED EARTH. JOINT BETWEEN BASE AND FIRST WALL SECTION SHALL BE FORMED BY SETTING WALL SECTION ON FRESH CONCRETE OR BY USING TONGUE & GROOVE IMPRESSION RING.
 - CONSTRUCT FLOW CHANNELS TO MATCH PIPE SHAPE USING STEEL TROWEL. ELEVATION CHANGES THROUGH MANHOLE SHALL BE A STRAIGHT GRADE WITH NO ABRUPT CHANGES. DIRECTIONAL CHANGES SHALL BE MADE WITH SMOOTH CURVES.

STORM DRAIN MANHOLE FRAME AND COVER L.C.S.D. STD. NO. 306-B

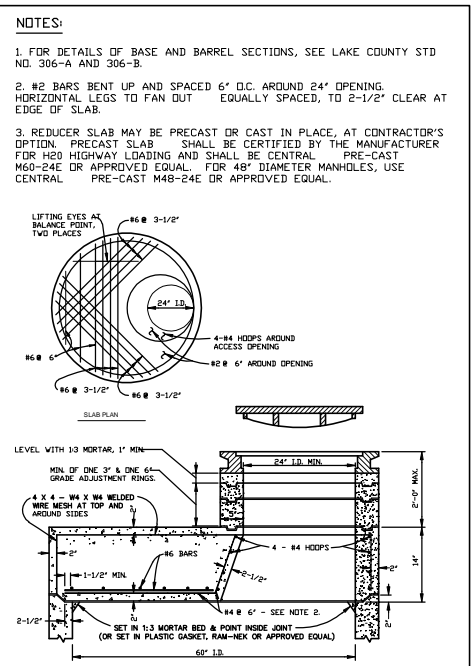
NOTE: NOTES REFER TO LAKE COUNTY STD. 306-A

L.C.S.D. STD. NO. 306-B



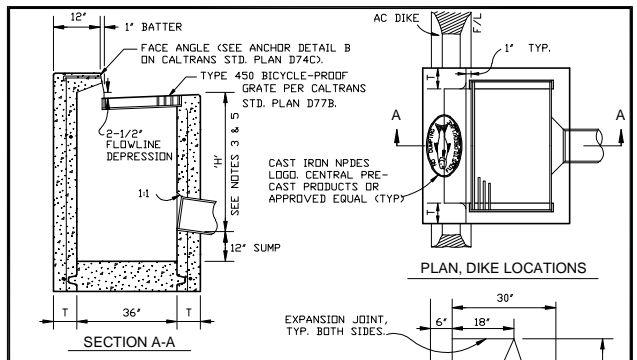
STORM DRAIN MANHOLE FRAME AND COVER L.C.S.D. STD. NO. 307

ALL CASTINGS SHALL BE DIPPED IN APPROVED ASPHALT PAINT.
ALL MATERIAL USED IN MANUFACTURING SHALL CONFORM TO A.S.T.M. DESIGNATION 48-30, OR TO UNITED STATES GOVERNMENT SPECIFICATIONS 00-6509.
MINIMUM WEIGHT COMPONENTS: COVER - 130 POUNDS FRAME - 135 POUNDS
CAST IRON FRAME AND COVER SHALL BE MACHINE FITTED AND PAINTED WITH BITUMINOUS PAINT. SOUTHBAY FOUNDRY SBF1900 OR APPROVED EQUAL.



STORM DRAIN MANHOLE PRECAST CONCRETE REDUCER SLAB L.C.S.D. STD. NO. 308

- NOTES:
- FOR DETAILS OF BASE AND BARREL SECTIONS, SEE LAKE COUNTY STD. NO. 306-A AND 306-B.
 - #2 BARS BENT UP AND SPACED 6" O.C. AROUND 24" OPENING. HORIZONTAL LEGS TO FAN OUT EQUALLY SPACED, TO 2-1/2" CLEAR AT EDGE OF SLAB.
 - REDUCER SLAB MAY BE PRECAST OR CAST IN PLACE, AT CONTRACTOR'S OPTION. PRECAST SLAB SHALL BE CERTIFIED BY THE MANUFACTURER FOR H20 HIGHWAY LOADING AND SHALL BE CENTRAL PRE-CAST M60-24E OR APPROVED EQUAL. FOR 48" DIAMETER MANHOLES, USE CENTRAL PRE-CAST M48-24E OR APPROVED EQUAL.



TYPE "C" CATCH BASIN STD. NO. 302



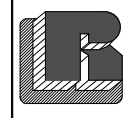
SCALE: NONE DRAWN: CLG CHK: JLW, TEM APPV: GRS DATE: JUNE 2004

- NOTES:
- SEE LAKE CO. STD. NO. 300 FOR DETAILS AND NOTES NOT SHOWN.
 - CATCH BASIN INLET MAY BE PRECAST OR CAST IN PLACE, AT CONTRACTOR'S OPTION. PRECAST INLET SHALL BE CENTRAL PRE-CAST PRODUCTS MODEL GDL OR APPROVED EQUAL. FOR DIKE LOCATIONS, PRECAST INLET SHALL BE CENTRAL PRE-CAST PRODUCTS MODEL G2 OR APPROVED EQUAL.
 - CATCH BASIN INLET MAY BE PRECAST OR CAST IN PLACE, AT CONTRACTOR'S OPTION. IF PRECAST, MEANS SHALL BE PROVIDED FOR ADJUSTMENTS IN THE FIELD TO MEET FINAL GRADE OF PAVING OR SURFACING. PRECAST BASE SHALL BE CENTRAL PRE-CAST PRODUCTS OR APPROVED EQUAL. CAST IN PLACE BASE SHALL BE REINFORCED WITH NO. 4 BARS AT 12" EACH WAY (E.W.), 15" CLEAR FROM INSIDE FACE OF WALL, AND SHALL BE CLASS 1 CONCRETE (6-SACK MIX). PROVIDE 48" MANHOLE BASE WHERE "H" IS GREATER THAN 8" AND UP TO 12" USING STOP REDUCER SLAB 48H-1M OR APPROVED EQUAL. PROVIDE SEPARATE 60" MANHOLE WHERE DEPTH IS GREATER THAN 12". "H" IS THE DIFFERENCE IN ELEVATION BETWEEN THE OUTLET PIPE FLOW LINE AND THE NORMAL GUTTER GRADE LINE UNDEPRESSED AT THE CURB FACE.
 - ALL PRECAST MATERIALS SHALL BE GRouted PER MANUFACTURER'S SPECIFICATIONS.
 - WALL THICKNESS, "T", SHALL BE 6" FOR DEPTHS UP TO 8' AND SHALL BE 8" FOR DEPTHS GREATER THAN 8'.

NO.	DATE	DESCRIPTION	BY

RH VENTURE LP
880 SECOND STREET
SANTA ROSA, CA. 95404

ROBIN HILL LANDING
ROAD & DRAINAGE DETAILS



RUZICKA ASSOCIATES
CONSULTING ENGINEERS
CIVIL ENGINEERING PLANNING SURVEYING
P.O. BOX 1189
2495 PARALLEL DR.
LAKEPORT CA. 95453
(707) 263-6155 FAX (707) 263-0768

DRAWN BY:	RLB	DATE:	11/19/07
CHECKED BY:	THOMAS ALAN HUNT RCE C 53327	DRAWING NO.:	DETAILS
JOB NO.:	04-5722.01	SHEET	25 of 36

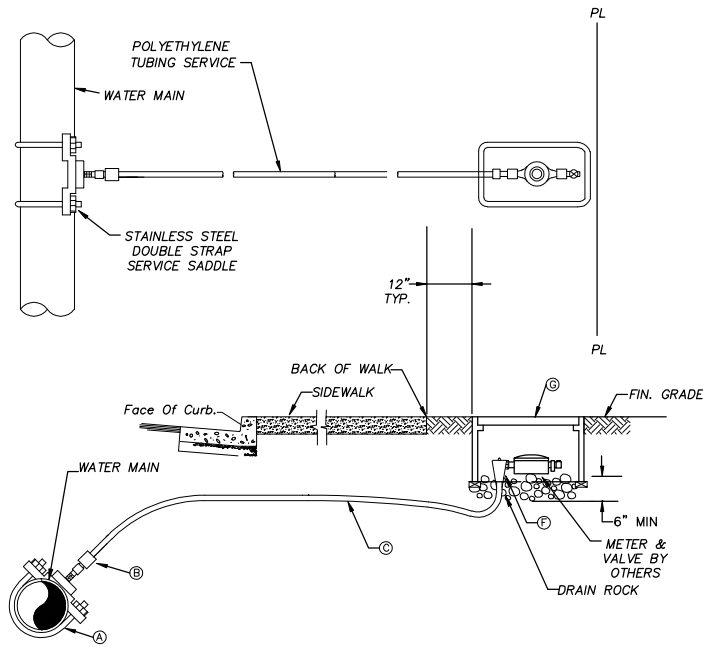
SERVICE DETAIL NOTES

- METER BOXES SHALL BE LOCATED WITHIN THE RIGHT OF WAY OR EASEMENT AND APPROXIMATELY ONE FOOT FROM THE BACK OF SIDEWALK OR EASEMENT LINE.
- PIPE AND FITTINGS SHALL BE IN ACCORDANCE WITH THE FOLLOWING SCHEDULE:

ITEM	DESCRIPTION	SINGLE SERVICE		DOUBLE SERVICE	
		1"	1 1/2" & 2"	1 1/2"	2"
A	SERVICE SADDLE W/INSUL. BUSHING	MUELLER BR2B ROMAC STYLE 202S	MUELLER BR2B ROMAC STYLE 202S	MUELLER BR2B ROMAC STYLE 202S	MUELLER BR2B ROMAC STYLE 202S
B	300 BALL CORP. VALVE	MUELLER B-20013-1"	MUELLER B-2969-1-1/2" B-2969-2"	MUELLER B2969-1-1/2"	MUELLER B2969-2"
C	P.E. TUBING	1" C.T.S.	1 1/2" OR 2" C.T.S.	1 1/2" C.T.S.	2" C.T.S.
D	TEE/ WYE	NOT REQUIRED	NOT REQUIRED	MUELLER H-15343-1'x1-1/2"	
E	PE TUBING	NOT REQUIRED	NOT REQUIRED	1" C.T.S.	
F	300 BALL ANGLE METER VALVE	MUELLER B-24258 5/8x3/4x1"	MUELLER B-24276	MUELLER B-24258 3/8x3/4x1"	FORD BFA13.777W W/C84.77 COUPLING
G	METER BOX AND LID	CHRISTY B30	CHRISTY B36/B40	CHRISTY 2-B30	CHRISTY B.40

- SERVICE FITTINGS SHALL BE MUELLER, AS LISTED IN THE SCHEDULE, OR EQUIVALENT MODEL AS MANUFACTURED BY OTHERS.
- THE OPEN ENDS OF THE METER STOPS AND VALVES SHALL BE WRAPPED IN POLYETHYLENE SHEET MATERIAL TO PREVENT ENTRY OF MATERIAL.
- AN INSULATED BUSHING SHALL BE INSTALLED BETWEEN DISSIMILAR MATERIAL.
- LOCATING WIRE SHALL NOT BE INSTALLED FOR SERVICE LINES.
- METER BOXES SHALL HAVE STEEL CHECKER PLATE LIDS WITH HINGED SELF CLOSING READING LID IN TRAFFIC AREAS AND REINFORCED CONCRETE LID WITH HINGED SELF CLOSING READING LID IN NON TRAFFIC AREAS.
- ALL ANGLE METER STOPS MUST HAVE LOCK WINGS.
- WHERE SHOWN IN THE PLANS MULTIPLE SERVICE LATERALS SHALL BE PLACED IN COMMON TRENCH.

* PER LAKE COUNTY SPECIAL DISTRICTS WATER DETAILS

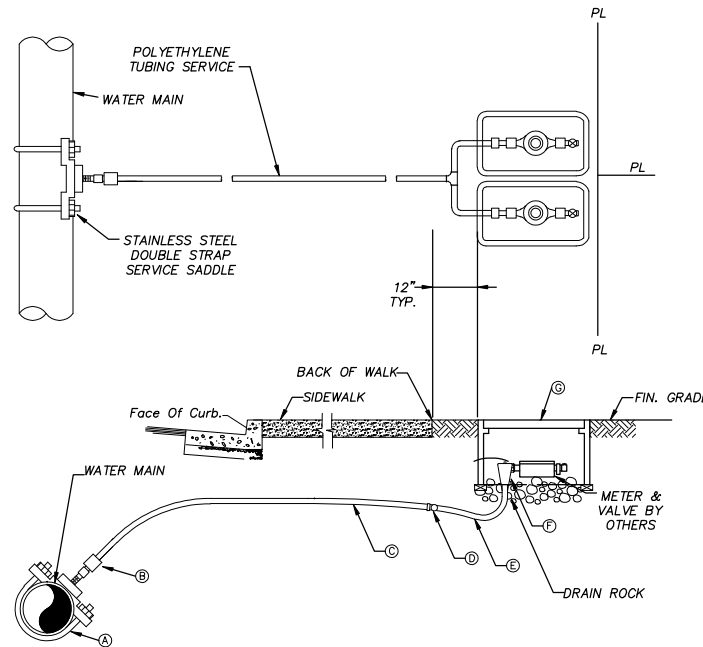


NOTES:

- SINGLE SERVICES SHALL BE 1" UNLESS OTHERWISE SHOWN ON THE PLANS.
- PIPE AND FITTING SCHEDULE SHALL BE AS SHOWN IN THE SERVICE DETAIL NOTES THIS SHEET.

SINGLE SERVICE, 1" - 2"

N.T.S. * PER LAKE COUNTY SPECIAL DISTRICTS WATER DETAILS

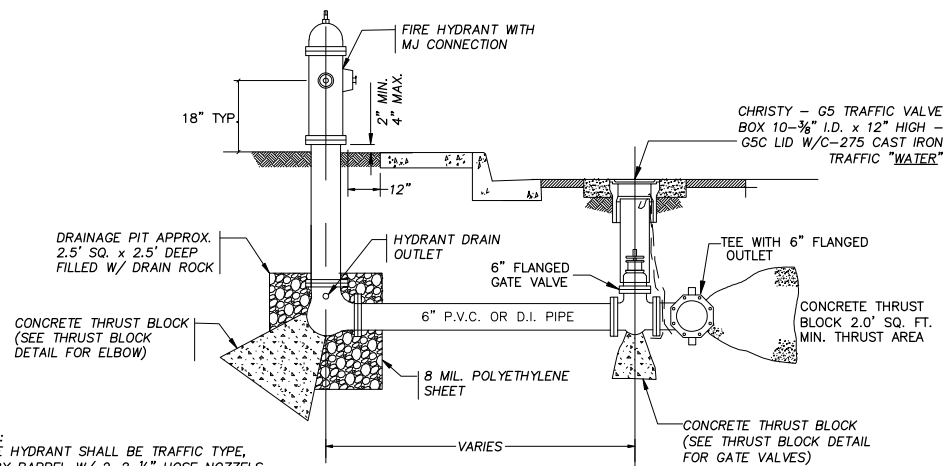


NOTES:

- DOUBLE SERVICES SHALL BE 1 1/2" UNLESS OTHERWISE SHOWN ON THE PLANS.
- PIPE AND FITTING SCHEDULE SHALL BE AS SHOWN IN THE SERVICE DETAIL NOTES THIS SHEET.

DOUBLE SERVICE, 1 1/2" - 2"

N.T.S. * PER LAKE COUNTY SPECIAL DISTRICTS WATER DETAILS



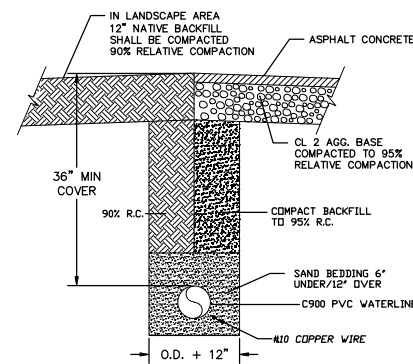
NOTES:

- FIRE HYDRANT SHALL BE TRAFFIC TYPE, DRY BARREL W/ 2-2-1/2" HOSE NOZZLES AND 1-4-1/2" STEAMER NOZZLE.
- FIRE HYDRANT LATERAL SHALL BE DUCTILE IRON OR PVC PIPE. DUCTILE IRON PIPE JOINTS SHALL BE RESTRAINED MECHANICAL JOINTS. PVC PIPE SHALL HAVE RETAINERS TO PROVIDE RESTRAINED JOINTS.
- HYDRANT PAD SHALL BE SLOPED AWAY FROM HINGE POINT IN CUT SLOPE AREAS.
- FIRE HYDRANTS SHALL BE AMERICAN DARLING B 62 B ONLY.

FIRE HYDRANT ASSEMBLY DETAIL

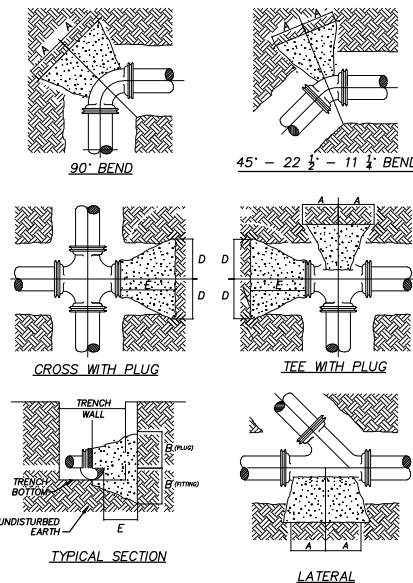
N.T.S. * PER LAKE COUNTY SPECIAL DISTRICTS WATER DETAILS

- NOTES:**
- COMPACTION SHALL BE SPECIFIED IN ASTM D 1557.
 - PIPE EMBEDMENT FOR PVC PIPE SHALL BE SAND ONLY, AS SPECIFIED.
 - PIPE EMBEDMENT FOR DUCTILE IRON PIPE MAY BE JOB EXCAVATED MATERIAL AS SPECIFIED FOR TRENCH BACKFILL EXCEPT MATERIAL SHALL NOT EXCEED 1-1/2 INCHES.
 - MINIMUM DISTANCE BELOW PIPE SHALL BE:
-PVC: 6 INCHES
-DUCTILE IRON IN ROCK OR COBBLES: 6 INCHES
-DUCTILE IRON - OTHER 2 INCHES
 - MINIMUM TRENCH WIDTH SHALL BE:
-FOR PIPE LESS THAN 8" - O.D. + 12 INCHES
-FOR PIPE 8" AND LARGER - O.D. + 16 INCHES
-FOR SERVICE LATERALS 2" OR SMALLER 12"



WATER LINE TRENCH SECTION

N.T.S. * PER LAKE COUNTY SPECIAL DISTRICTS WATER DETAILS



NOTE:

- POLYETHYLENE (VISQUEEN) OR EQUAL SHALL BE PLACED BETWEEN CONCRETE AND PIPE.

THRUST BLOCK DETAILS

N.T.S. * PER LAKE COUNTY SPECIAL DISTRICTS WATER DETAILS

THRUST BLOCK SCHEDULE

PIPE SIZE INCHES	HOLD DIMENSIONS E MIN. B	150 P.S.I. TEST PRESSURE								
		A	A	A	A	A	A	C	D	E
4	10" x 7"	10"	6"	3"	3"	7"	7"	10"	7"	8"
6	16" x 10"	15"	8"	4"	4"	10"	10"	12"	10"	8"
8	20" x 14"	18"	10"	5"	5"	14"	14"	14"	14"	12"
10	28" x 16"	24"	14"	7"	7"	16"	16"	16"	16"	14"
12	30" x 20"	26"	16"	8"	8"	20"	20"	18"	20"	20"

NOTES:

- THRUST BLOCKS SHALL BE POURED AGAINST UNDISTURBED MATERIAL, WHERE TRENCH WALL HAS BEEN DISTURBED EXCAVATE ALL LOOSE MATERIAL AND EXTEND THRUST BLOCK TO UNDISTURBED MATERIAL.
- ON TEES AND BENDS EXTEND THRUST BLOCK THE FULL LENGTH AND PUT WOOD BLOCKING IN FRONT OF ALL PLUGS BEFORE POURING CONCRETE.
- ALL THRUST BLOCKS SHALL BE CAST IN PLACE WITH 3000 P.S.I. CONCRETE.
- PIPES SMALLER THAN 4" SHALL USE THRUST BLOCKS SIZED FOR 4" PIPES.

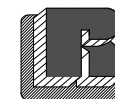
THRUST BLOCK SCHEDULE

* PER LAKE COUNTY SPECIAL DISTRICTS WATER DETAILS

NO.	DATE	DESCRIPTION	BY

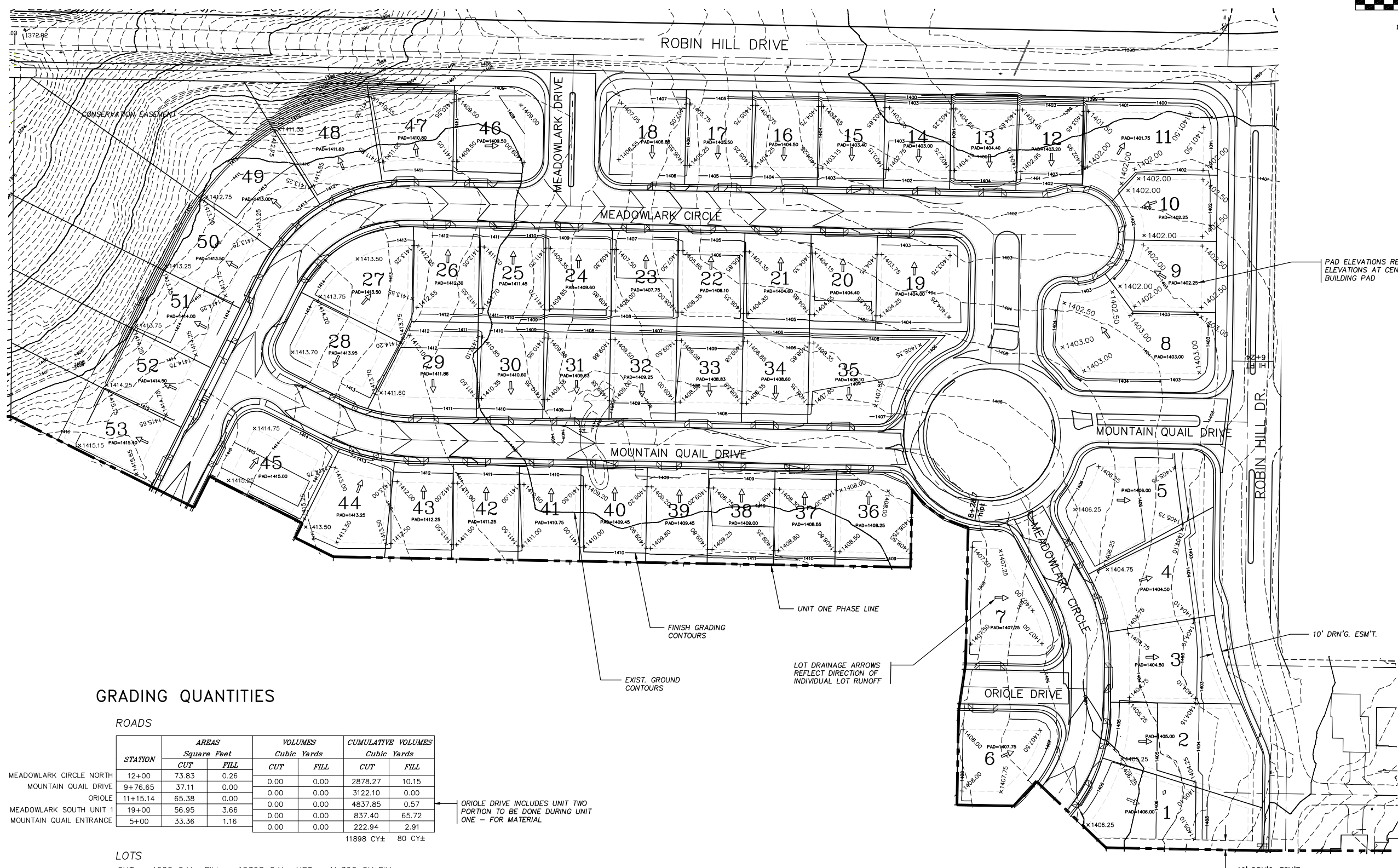
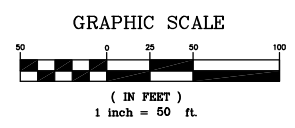
RH VENTURE LP
880 SECOND STREET
SANTA ROSA, CA. 95404

ROBIN HILL LANDING
WATER DETAILS



RUZICKA ASSOCIATES
CONSULTING ENGINEERS
CIVIL ENGINEERING PLANNING SURVEYING
P.O. BOX 1189
2495 PARALLEL DR.
LAKEPORT, CA. 95453
(707) 263-6155 FAX (707) 263-0768

DRAWN BY: RLB	DATE: 11/19/07
CHECKED BY: THOMAS ALAN HUNT RCE C 53327	DRAWING NO.: DETAILS
JOB NO.: 04-5722.01	SHEET: 29 of 36



GRADING QUANTITIES

ROADS

STATION	AREAS Square Feet		VOLUMES Cubic Yards		CUMULATIVE VOLUMES Cubic Yards	
	CUT	FILL	CUT	FILL	CUT	FILL
MEADOWLARK CIRCLE NORTH	12+00	73.83	0.26		2878.27	10.15
MOUNTAIN QUAIL DRIVE	9+76.65	37.11	0.00		3122.10	0.00
ORIOLE	11+15.14	65.38	0.00		4837.85	0.57
MEADOWLARK SOUTH UNIT 1	19+00	56.95	3.66		837.40	65.72
MOUNTAIN QUAIL ENTRANCE	5+00	33.36	1.16		222.94	2.91
					11898 CY±	80 CY±

ORIOLE DRIVE INCLUDES UNIT TWO PORTION TO BE DONE DURING UNIT ONE - FOR MATERIAL

LOTS

CUT = 4002 C.Y. FILL = 15398 C.Y. NET = 11,396 CY FILL

Z:\Road09-TomHill\Land Projects\2005\045722\Road Construction\5722-grading-unit-1.dwg

RH VENTURE LP
880 SECOND STREET
SANTA ROSA, CA. 95404

**ROBIN HILL LANDING
UNIT ONE
LOT GRADING**



RUZICKA ASSOCIATES
CONSULTING ENGINEERS
CIVIL ENGINEERING PLANNING SURVEYING
P.O. BOX 1189 2495 PARALLEL DRIVE
LAKEPORT CA. 95453 (707) 263-6155
FAX (707) 263-0768

DRAWN BY:	RLB	DATE:	11/19/07
CHECKED BY:	THOMAS ALAN HUNT RCE C 53327	DRAWING NO.:	5722-GRADING-UNIT-1
JOB NO.:	04-5722.01	SHEET	33 OF 36